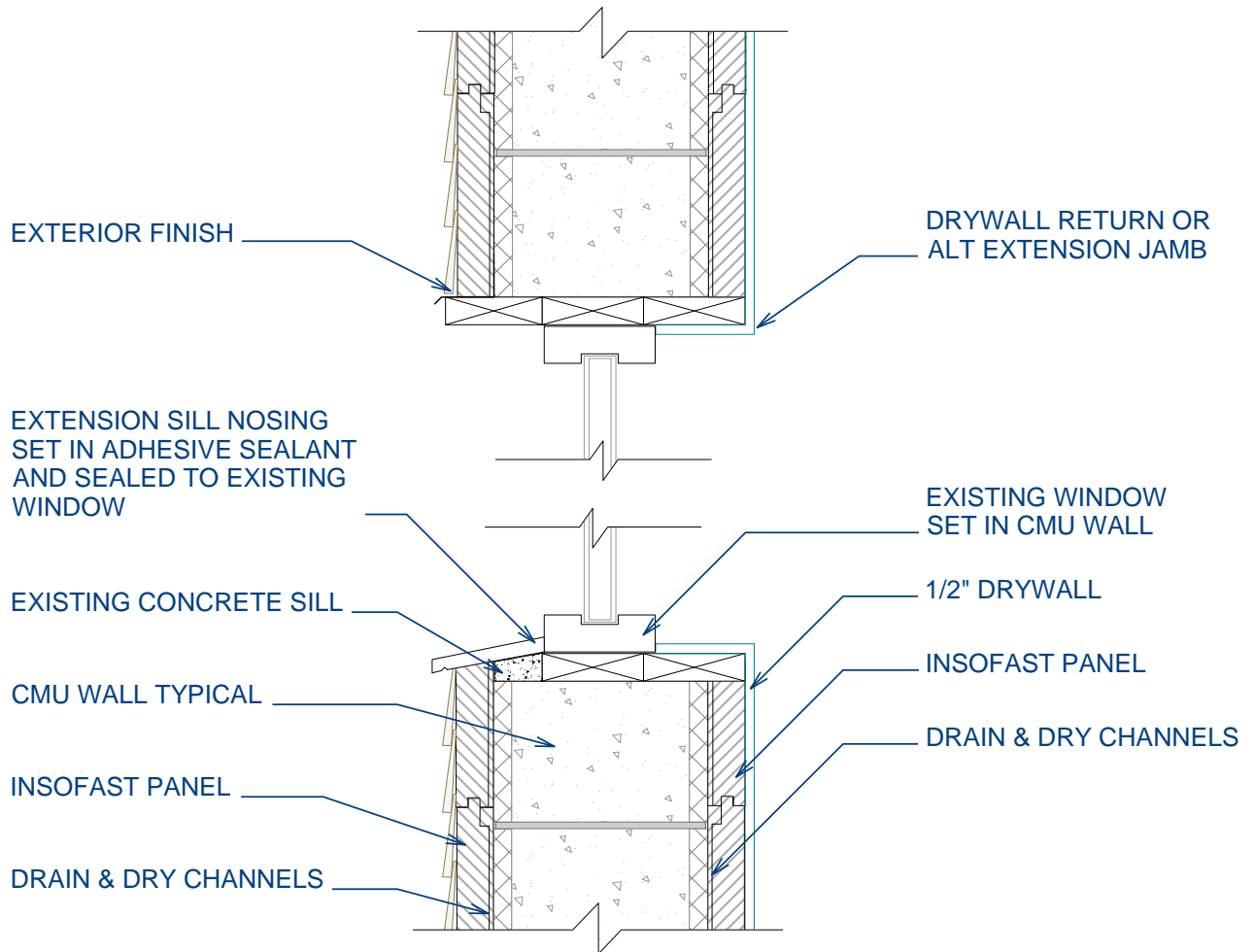


ISF 07.01.01 INSOFAST - WINDOW - CMU - INSET WINDOW - RETROFIT



DUE TO VARIANCES IN LOCAL CODES, CONSTRUCTION PRACTICES, AND REQUIREMENTS, ALL DETAILS SHALL BE CONSTRUCTED IN ACCORDANCE WITH SUCH LOCAL CODES, CONSTRUCTION PRACTICES, AND REQUIREMENTS REGARDLESS OF DETAIL CONSTRUCTION SHOWN IN THIS DRAWING, INSOFAST, LLC MAKES NO WARRANTY, EXPRESSED OR IMPLIED. INSOFAST, LLC ASSUMES NO LEGAL LIABILITY OR RESPONSIBILITY FOR THE ACCURACY, COMPLETENESS, OR USEFULNESS OR ANY INFORMATION APPARATUS, PRODUCT OR PROCESS DISCLOSED.



Window - CMU - Inset Window - Retrofit

888-501-7899

InSoFast, LLC

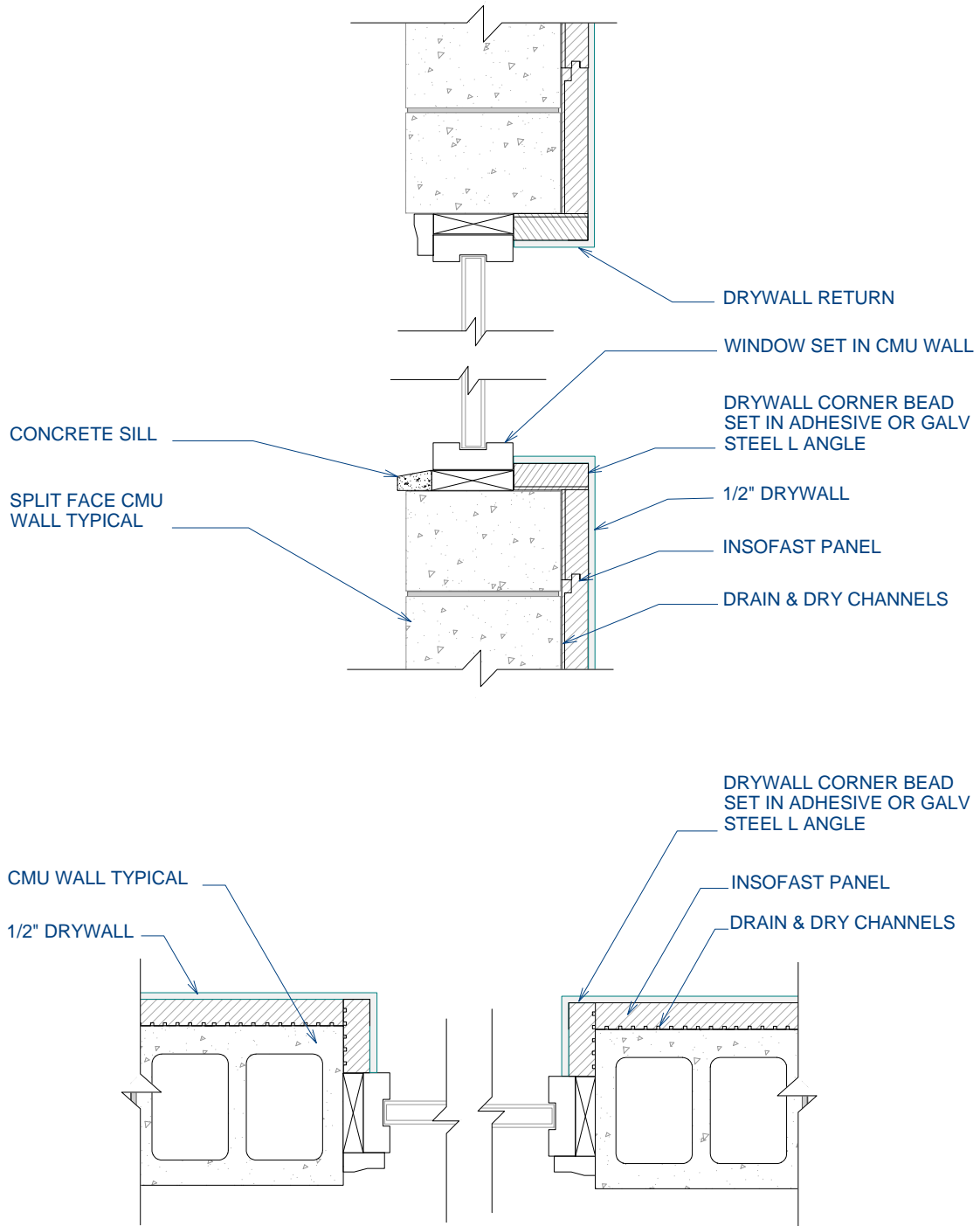
www.InSoFast.com

Scale: NOT TO SCALE

Date: March 2010

Detail #: **ISF 07.01.01**

ISF 07.01.05 INSOFAST - WINDOW - CMU - DRYWALL RETURN OVER INSOFAST



DUE TO VARIANCES IN LOCAL CODES, CONSTRUCTION PRACTICES, AND REQUIREMENTS, ALL DETAILS SHALL BE CONSTRUCTED IN ACCORDANCE WITH SUCH LOCAL CODES, CONSTRUCTION PRACTICES, AND REQUIREMENTS REGARDLESS OF DETAIL CONSTRUCTION SHOWN IN THIS DRAWING, INSOFAST, LLC MAKES NO WARRANTY, EXPRESSED OR IMPLIED. INSOFAST, LLC ASSUMES NO LEGAL LIABILITY OR RESPONSIBILITY FOR THE ACCURACY, COMPLETENESS, OR USEFULNESS OR ANY INFORMATION APPARATUS, PRODUCT OR PROCESS DISCLOSED.



Window - CMU - Drywall Return over InSoFast

888-501-7899

InSoFast, LLC

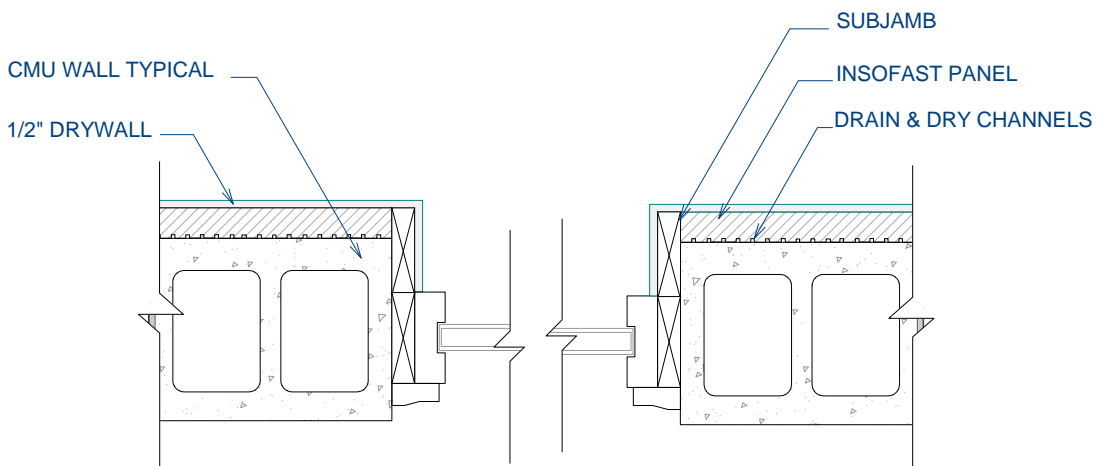
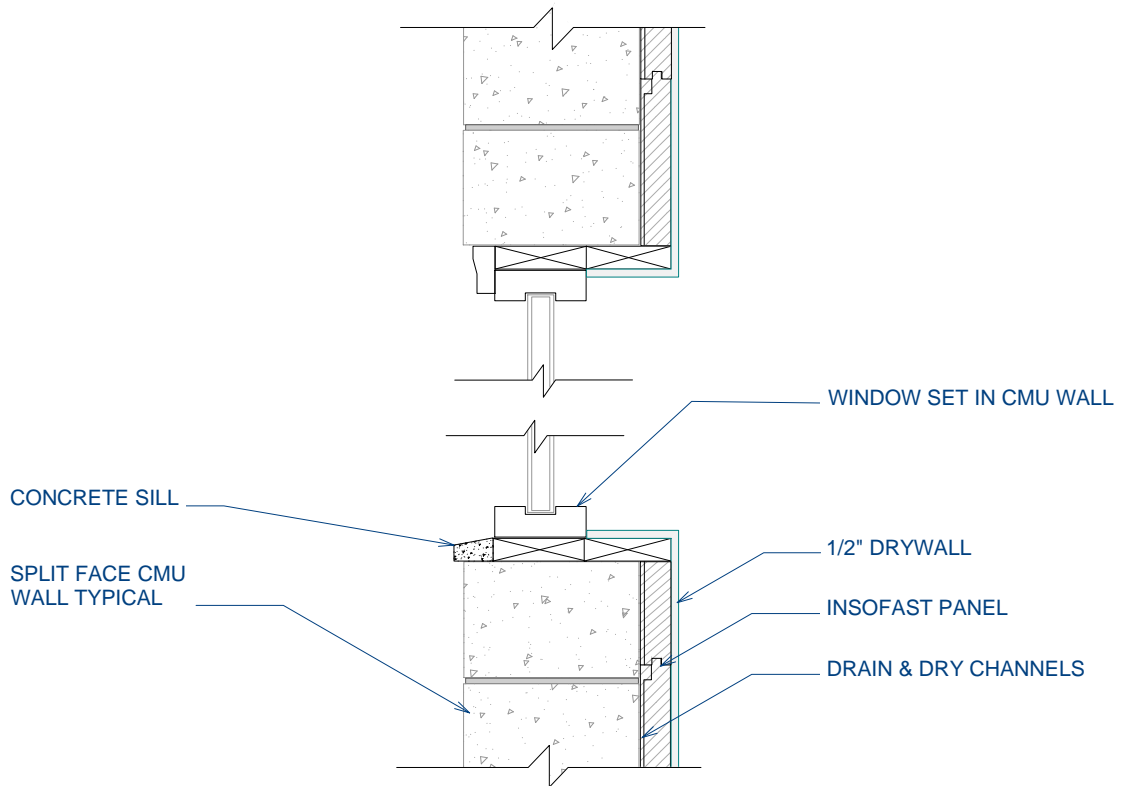
www.InSoFast.com

Scale: NOT TO SCALE

Date: March 2010

Detail #: **ISF 07.01.05**

ISF 07.01.06 INSOFast - WINDOW - CMU - DRYWALL RETURN OVER WOOD FRAMING



DUE TO VARIANCES IN LOCAL CODES, CONSTRUCTION PRACTICES, AND REQUIREMENTS, ALL DETAILS SHALL BE CONSTRUCTED IN ACCORDANCE WITH SUCH LOCAL CODES, CONSTRUCTION PRACTICES, AND REQUIREMENTS REGARDLESS OF DETAIL CONSTRUCTION SHOWN IN THIS DRAWING, INSOFast, LLC MAKES NO WARRANTY, EXPRESSED OR IMPLIED. INSOFast, LLC ASSUMES NO LEGAL LIABILITY OR RESPONSIBILITY FOR THE ACCURACY, COMPLETENESS, OR USEFULNESS OR ANY INFORMATION APPARATUS, PRODUCT OR PROCESS DISCLOSED.



Window - CMU - Drywall Return over Wood Framing

888-501-7899

InSoFast, LLC

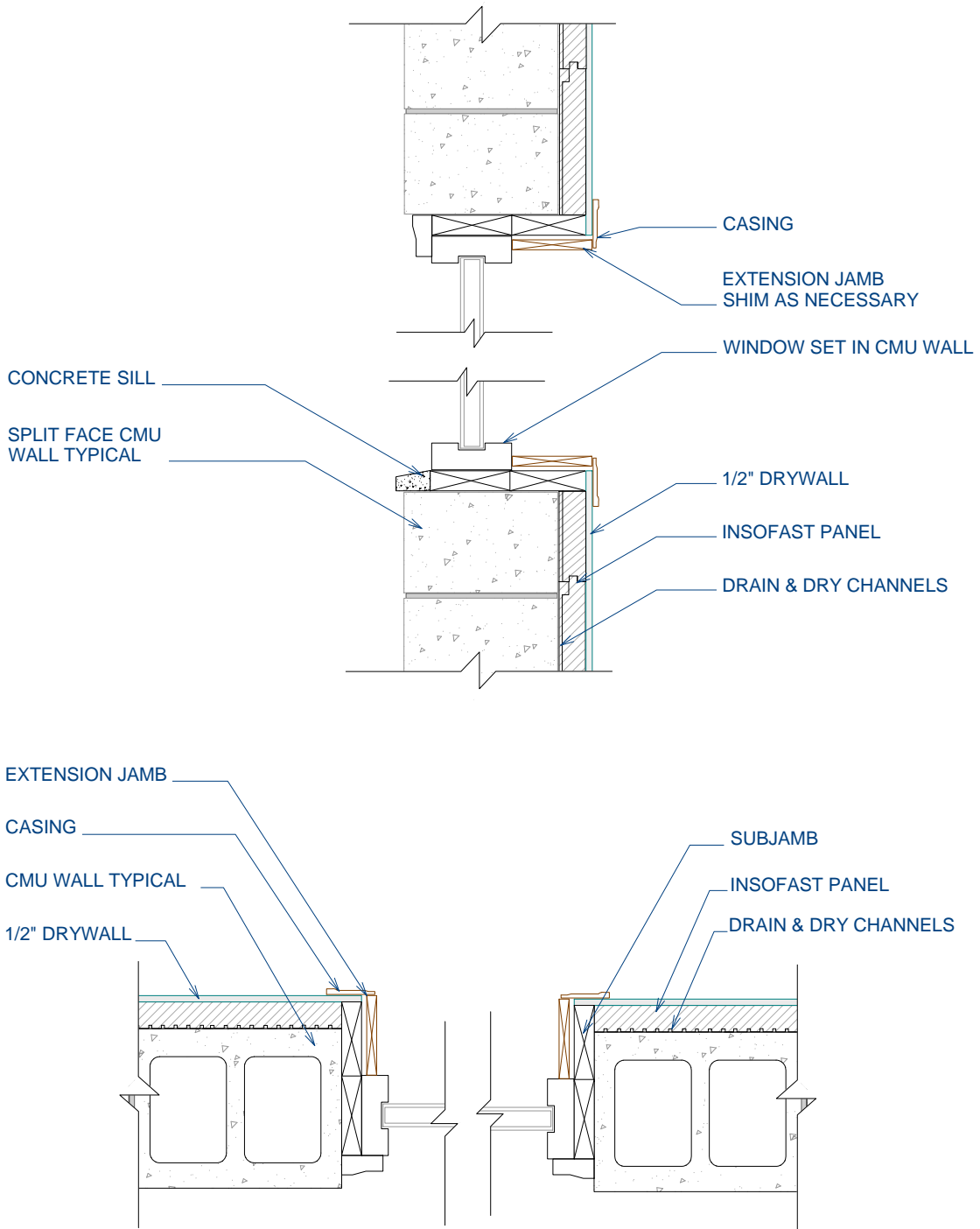
www.InSoFast.com

Scale: NOT TO SCALE

Date: March 2010

Detail #: **ISF 07.01.06**

ISF 07.01.08 INSOFAST - WINDOW - CMU - WOOD EXTENSION JAMB & TRIM WITH SOLID BACKING



DUE TO VARIANCES IN LOCAL CODES, CONSTRUCTION PRACTICES, AND REQUIREMENTS, ALL DETAILS SHALL BE CONSTRUCTED IN ACCORDANCE WITH SUCH LOCAL CODES, CONSTRUCTION PRACTICES, AND REQUIREMENTS REGARDLESS OF DETAIL CONSTRUCTION SHOWN IN THIS DRAWING, INSOFAST, LLC MAKES NO WARRANTY, EXPRESSED OR IMPLIED. INSOFAST, LLC ASSUMES NO LEGAL LIABILITY OR RESPONSIBILITY FOR THE ACCURACY, COMPLETENESS, OR USEFULNESS OR ANY INFORMATION APPARATUS, PRODUCT OR PROCESS DISCLOSED.



Window - CMU - Wood Extension Jamb & Trim with Solid Backing

888-501-7899

InSoFast, LLC

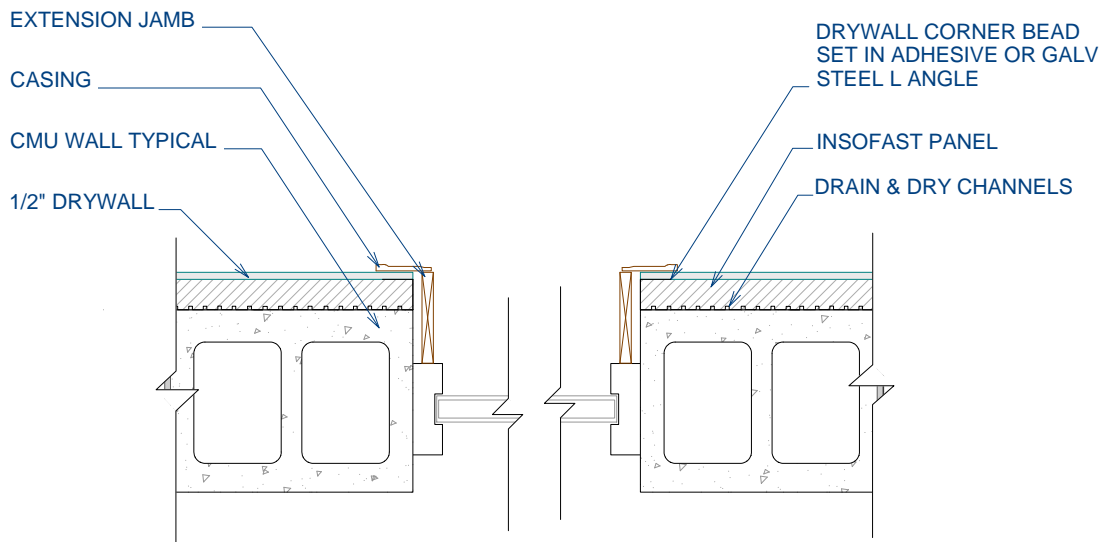
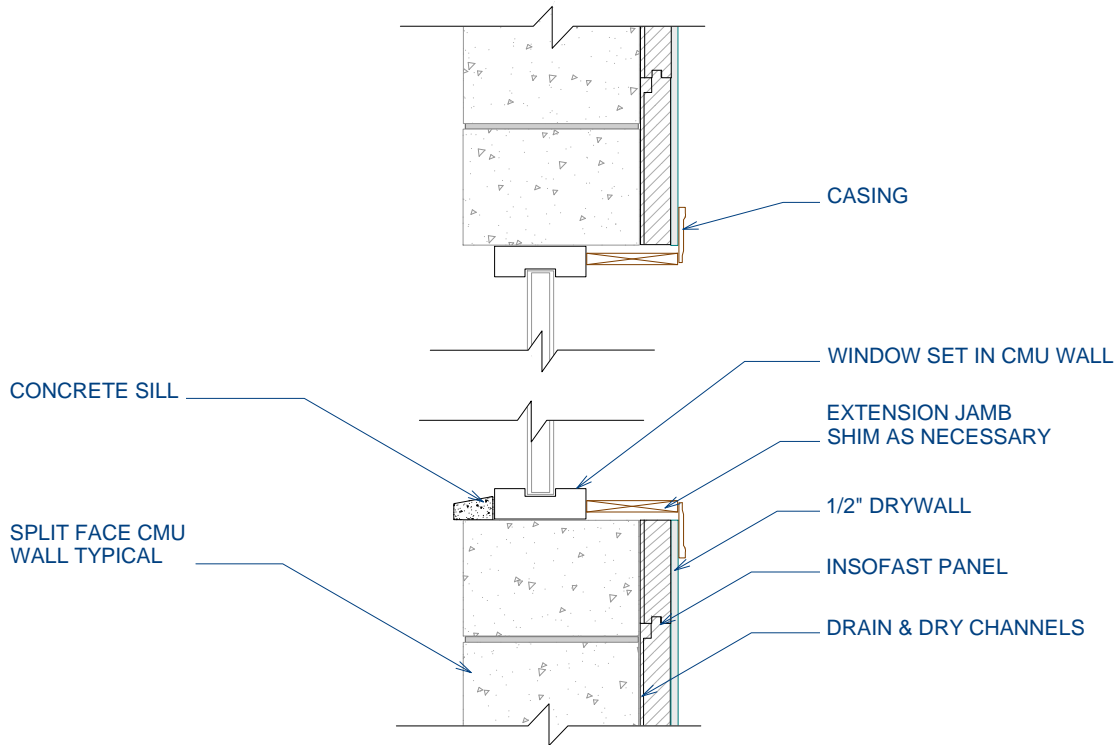
www.InSoFast.com

Scale: NOT TO SCALE

Date: March 2010

Detail #: **ISF 07.01.08**

ISF 07.01.08 INSOFast - WINDOW - CMU - WOOD EXTENSION JAMB & TRIM



DUE TO VARIANCES IN LOCAL CODES, CONSTRUCTION PRACTICES, AND REQUIREMENTS, ALL DETAILS SHALL BE CONSTRUCTED IN ACCORDANCE WITH SUCH LOCAL CODES, CONSTRUCTION PRACTICES, AND REQUIREMENTS REGARDLESS OF DETAIL CONSTRUCTION SHOWN IN THIS DRAWING, INSOFast, LLC MAKES NO WARRANTY, EXPRESSED OR IMPLIED. INSOFast, LLC ASSUMES NO LEGAL LIABILITY OR RESPONSIBILITY FOR THE ACCURACY, COMPLETENESS, OR USEFULNESS OR ANY INFORMATION APPARATUS, PRODUCT OR PROCESS DISCLOSED.



Window - CMU - Wood Extension Jamb & Trim over Wood

888-501-7899

InSoFast, LLC

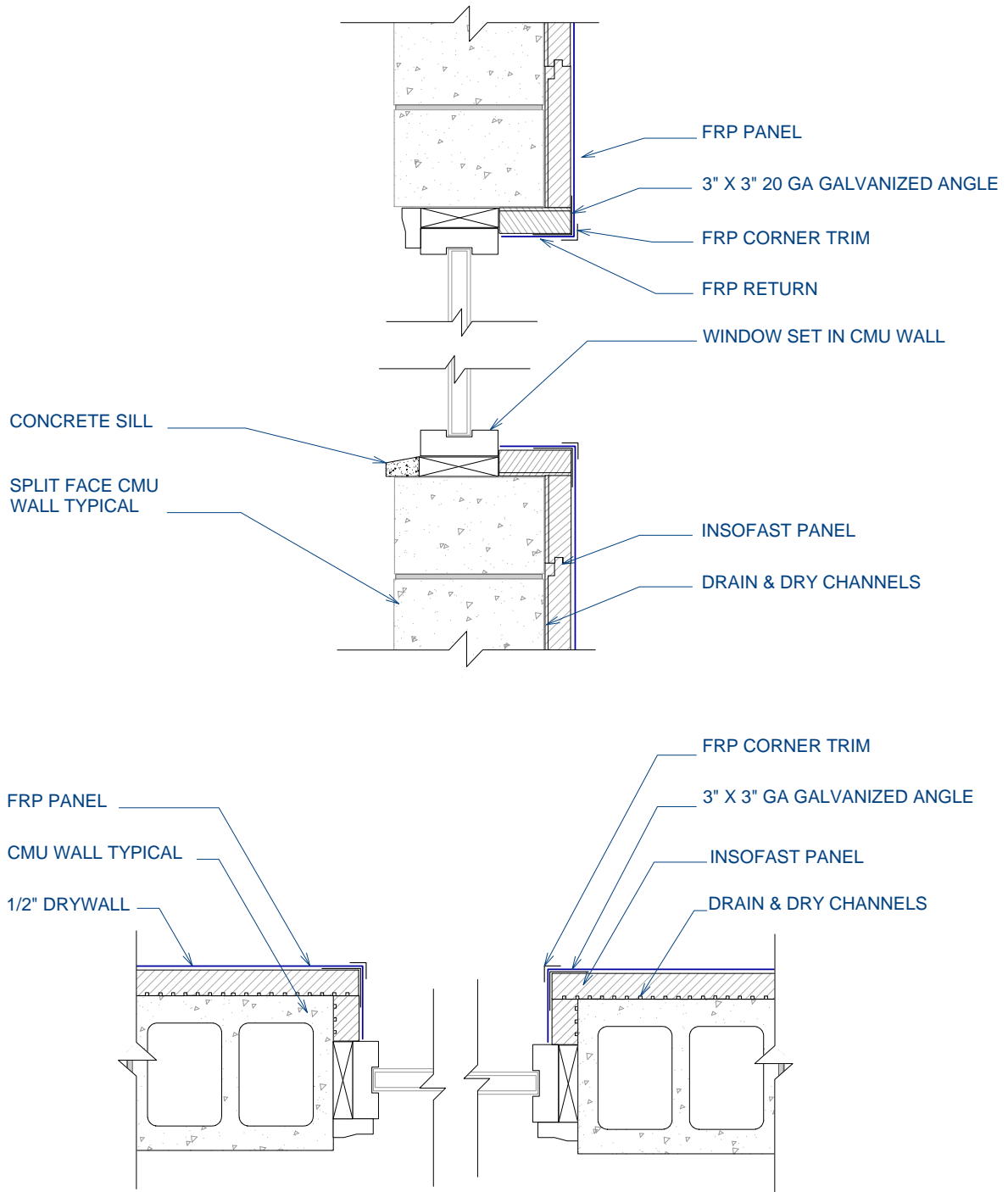
www.InSoFast.com

Scale: NOT TO SCALE

Date: March 2010

Detail #: **ISF 07.01.09**

ISF 07.01.21 INSOFAST - WINDOW DETAIL - CMU - RETURN WITH FIBER REINFORCED PANEL (FRP)



DUE TO VARIANCES IN LOCAL CODES, CONSTRUCTION PRACTICES, AND REQUIREMENTS, ALL DETAILS SHALL BE CONSTRUCTED IN ACCORDANCE WITH SUCH LOCAL CODES, CONSTRUCTION PRACTICES, AND REQUIREMENTS REGARDLESS OF DETAIL CONSTRUCTION SHOWN IN THIS DRAWING, INSOFAST, LLC MAKES NO WARRANTY, EXPRESSED OR IMPLIED. INSOFAST, LLC ASSUMES NO LEGAL LIABILITY OR RESPONSIBILITY FOR THE ACCURACY, COMPLETENESS, OR USEFULNESS OR ANY INFORMATION APPARATUS, PRODUCT OR PROCESS DISCLOSED.



Window Detail - CMU - Return with FRP

888-501-7899

InSoFast, LLC

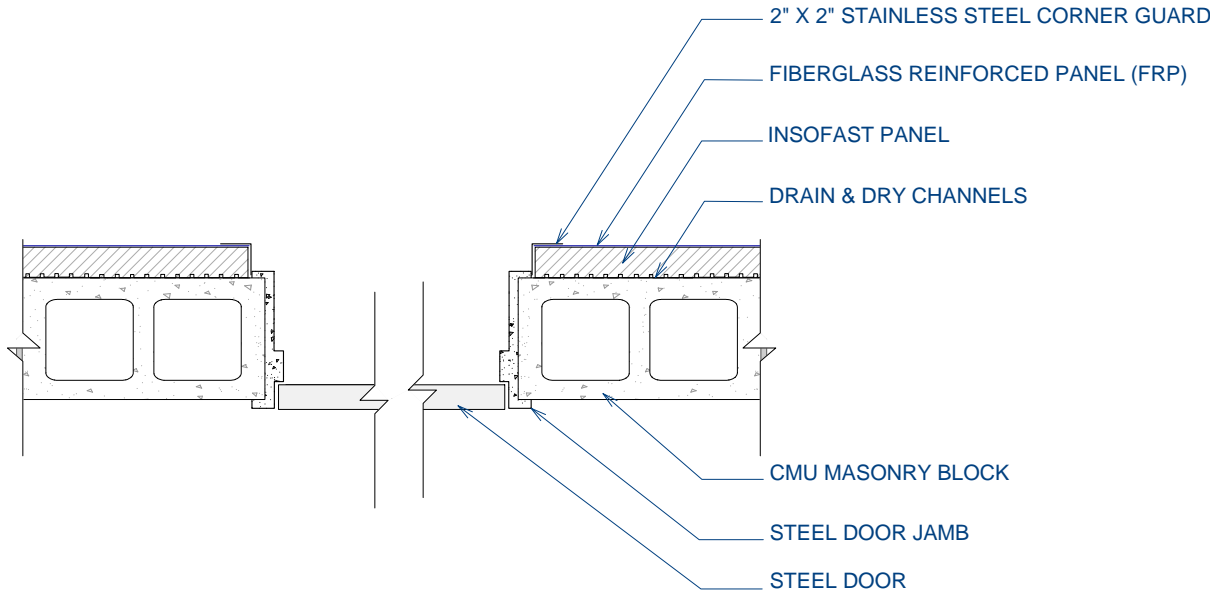
www.InSoFast.com

Scale: NOT TO SCALE

Date: March 2010

Detail #: **ISF 07.01.21**

**ISF 07.01.25 INSOFAST - DOOR - CMU - FULL WIDTH STEEL JAMB -
FIBER REINFORCED PANEL (FRP) FINISH**



* 18 GA #304 STAINLESS STEEL CORNER GUARD
AVAILABLE THROUGH: WWW.FRPSHOP.COM

DUE TO VARIANCES IN LOCAL CODES, CONSTRUCTION PRACTICES, AND REQUIREMENTS, ALL DETAILS SHALL BE CONSTRUCTED IN ACCORDANCE WITH SUCH LOCAL CODES, CONSTRUCTION PRACTICES, AND REQUIREMENTS REGARDLESS OF DETAIL CONSTRUCTION SHOWN IN THIS DRAWING, INSOFAST, LLC MAKES NO WARRANTY, EXPRESSED OR IMPLIED. INSOFAST, LLC ASSUMES NO LEGAL LIABILITY OR RESPONSIBILITY FOR THE ACCURACY, COMPLETENESS, OR USEFULNESS OR ANY INFORMATION APPARATUS, PRODUCT OR PROCESS DISCLOSED.



Door - CMU - Full Width Steel Jamb - FRP Finish

888-501-7899

InSoFast, LLC

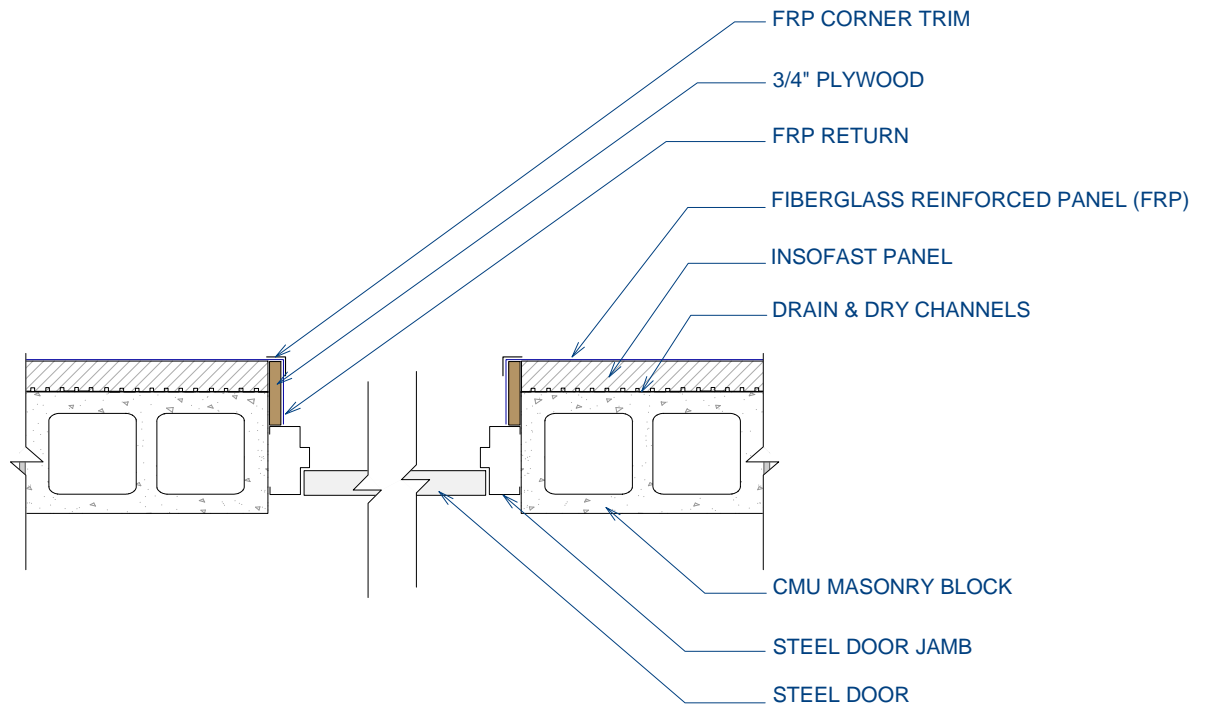
www.InSoFast.com

Scale: NOT TO SCALE

Date: March 2010

Detail #: **ISF 07.01.25**

ISF 07.01.26 INSOFAST - DOOR - CMU - INSET STEEL JAMB - FIBER REINFORCED PANEL (FRP) RETURN



DUE TO VARIANCES IN LOCAL CODES, CONSTRUCTION PRACTICES, AND REQUIREMENTS, ALL DETAILS SHALL BE CONSTRUCTED IN ACCORDANCE WITH SUCH LOCAL CODES, CONSTRUCTION PRACTICES, AND REQUIREMENTS REGARDLESS OF DETAIL CONSTRUCTION SHOWN IN THIS DRAWING, INSOFAST, LLC MAKES NO WARRANTY, EXPRESSED OR IMPLIED. INSOFAST, LLC ASSUMES NO LEGAL LIABILITY OR RESPONSIBILITY FOR THE ACCURACY, COMPLETENESS, OR USEFULNESS OR ANY INFORMATION APPARATUS, PRODUCT OR PROCESS DISCLOSED.



Door - CMU - Inset Steel Jamb - FRP Return

888-501-7899

InSoFast, LLC

www.InSoFast.com

Scale: NOT TO SCALE

Date: March 2010

Detail #: **ISF 07.01.26**