



William Longo
Architectural and Application
Development Manager
Henkel Corporation
32150 Just Imagine Dr.
Avon, OH 44011-1355
Tel. 440-937-1458

April 13, 2009

Mr. Ed Scherrer
InSoFast, LLC
7255 Commerce Circle E.
Minneapolis, MN 55432

Subject: Adhesive tensile strength to InSoFast ribbed stud substrate

Dear Ed,

We have completed the testing and evaluation of PL 300, PL Premium and Loctite PowerGrab to the InSoFast panel ribbed stud that you sent in. A description of the tests and the results are listed below.

Introduction:

Samples of the InSofast ribbed studs were received on February 13, 2009 for adhesion and compatibility testing with various adhesives manufactured by Henkel. Adhesion tests were set up on February 20, 2009 and tested on March 27, 2009. Test specimens were assembled using an aluminum substrate as the secondary bonding surface. Aluminum was selected for its ability to resist substrate failure. Adhesive was applied to the aluminum, the aluminum was then mounted to the ribbed stud which created a bonding surface of 1 sq.in. (Photo 1). After the allotted cure time test specimens were placed in the ATS testing machine (Photo 3, 4 and 5) and tested for tensile strength at a separation rate of .002"/min.

Test results:

Product	Tensile Strength	Failure Mode	Compatibility
PL-300 Foam Board Adh.	34 psi	C	Yes
PL Premium PU Adh.	48 psi.	AP	Yes
PowerGrab	32 psi	AP	Yes

C = Cohesive failure

AP = adhesive failure to Ribbed Stud

This report is for information only. Adhesive and compatibility results are not an implied suitability for use. InSoFast must determine the suitability of the adhesive for use with its products.

Sincerely,

A handwritten signature in blue ink, appearing to read "Bill Longo", with a stylized flourish at the end.

Bill Longo

Photo #4



Photo #5



Photo #1



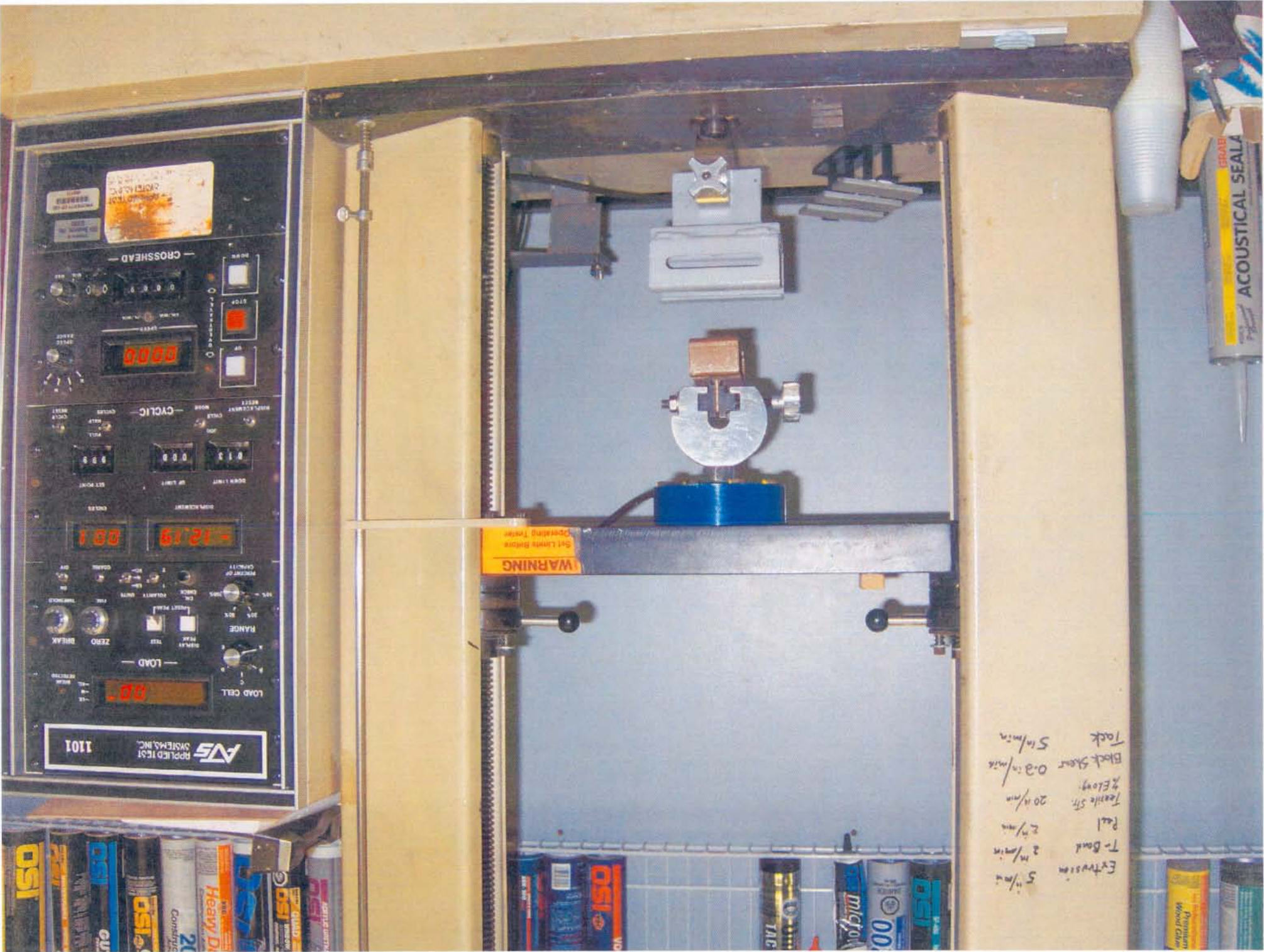


Photo # 2

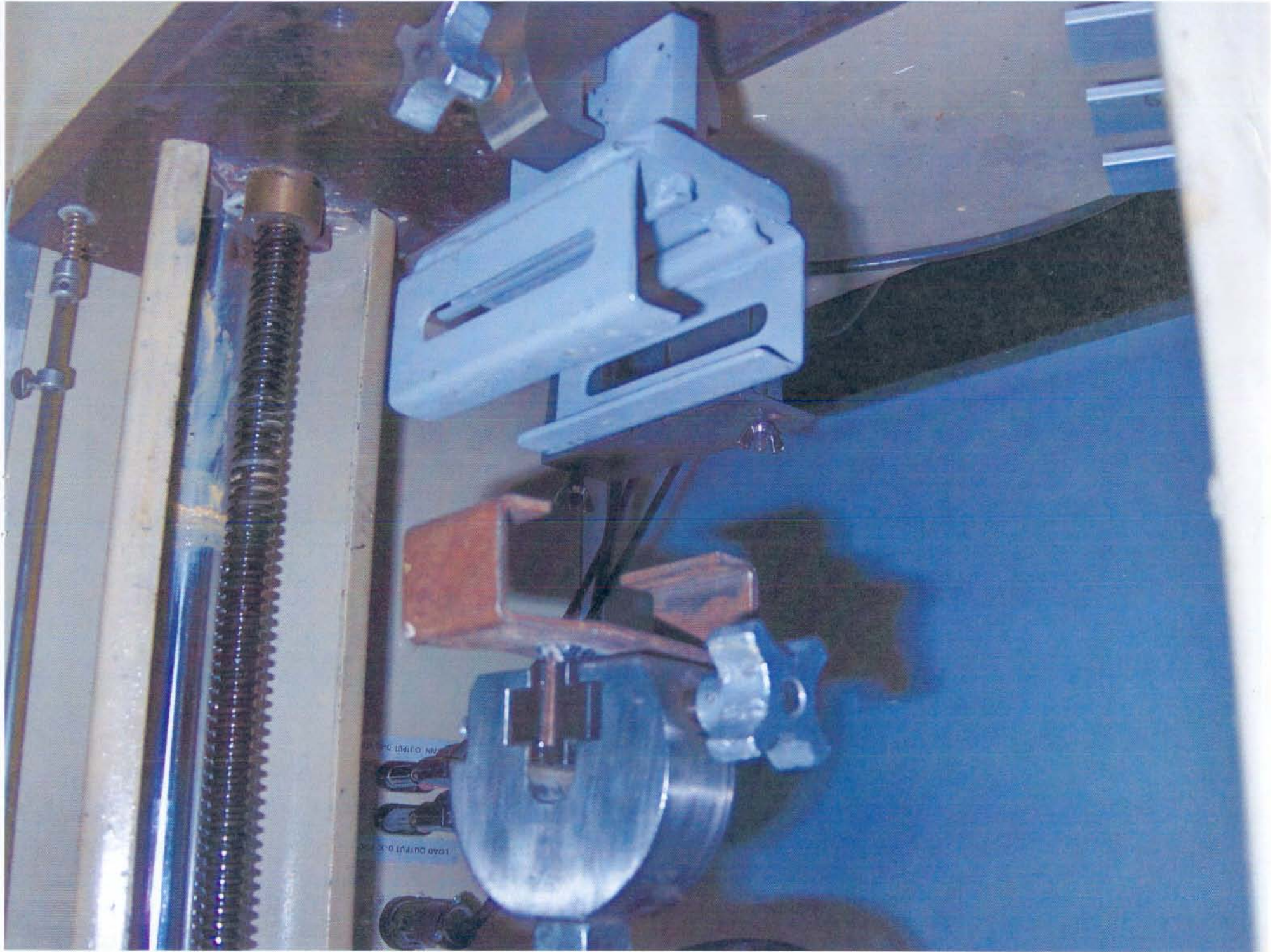


Photo #3