

Electrical Wiring Guide



1. Cutting out for Outlet Boxes.



2. Measure mark and locate where you want your electrical box to be installed. Next press the outlet box against the foam to create a mark or an outline to guide you in cutting out for the electrical box.



3. Then slice the foam like you are cutting a loaf of bread. It is okay to cut out a larger opening than the electrical box. You will need room to be able to work with the wiring.



4. Once we cut the out for the opening to the depth, we need pop out the piece of foam you just cut. You can save this piece of foam to reinsert later or spray foam and seal the area.

Electrical Wiring Guide



5. Pulling wires through InSoFast is easy! Make sure your wire is not kinked. Bend the leading edge of the wire with a linemen's pliers so it does not catch in the channel's raceway.



6. If your wire is kinked it will make the most annoying squeak and will be difficult to pull through the raceway.



7. Slide your wire through to the next opening or junction box.



8. InSoFast raceways are at 1 1/4" deep and meet the electrical code. Standard Romex type wiring or Flexible conduit can also be used please consult with your local electrical inspector.



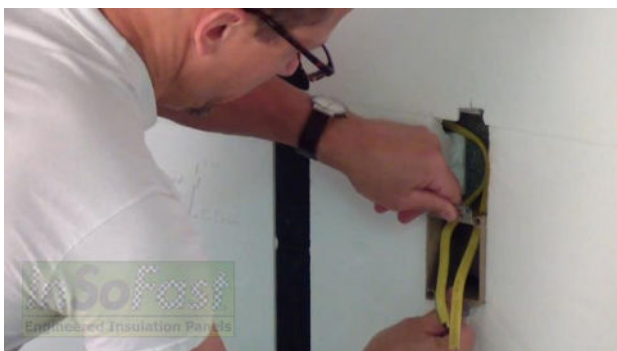
Electrical Wiring Guide



9. Install a 2-1/2" deep box, a 1 1/2" deep box with a 1" mud ring or a 2" deep box with a 1/2" mud ring. Secure plastic, metal, or fiberglass electrical boxes directly to the concrete wall with adhesive or a mechanical fastener.



10. Work the wires into the box.



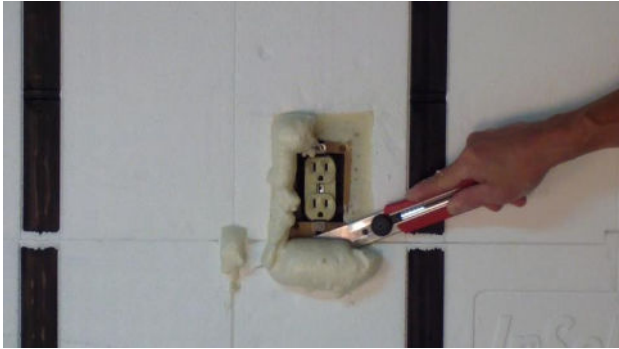
11. Secure the box to the wall by either a concrete fastener or spray foam adhesive always check with the building codes to what they require.



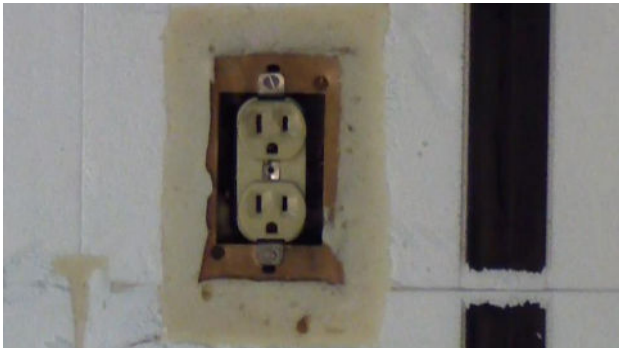
12. Here we are demonstrating the use of spray foam to seal air seal the box to the wall. Spray foaming completely around the outlet provides an air and moisture barrier that will protect the electrical box.



Electrical Wiring Guide



13. After the spray foam cures you will be able to go back and trim away the excess foam with a razor blade knife.



14. Spray foaming completely around the outlet provides an air and moisture barrier that will protect the electrical box.



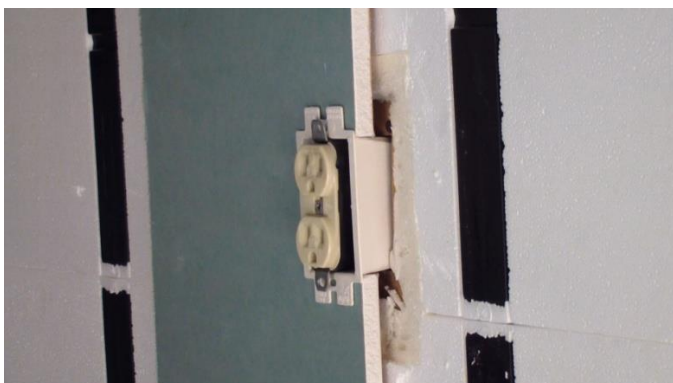
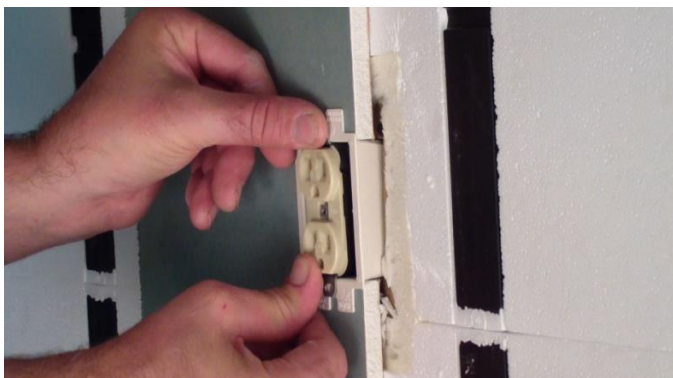
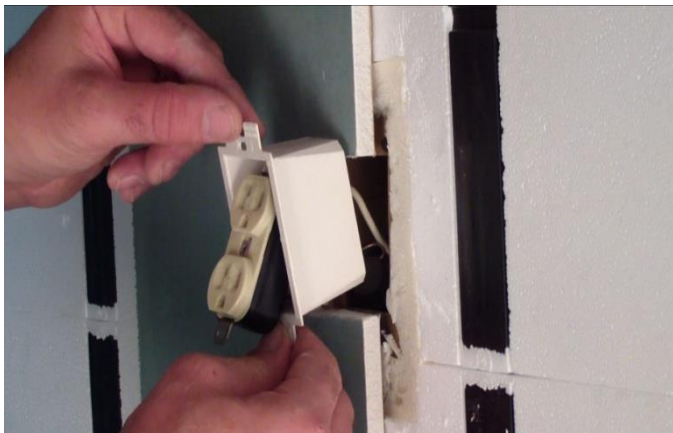
15. Once the drywall is installed over the InSoFast you may find that the electrical box is $\frac{1}{2}$ " to deep. This can be easily fixed.



16. Available at most lumber supply yards are code approved electrical box extensions..



Electrical Wiring Guide




BE1-2CS Easy & safe to install. Prevents broken cover plates!

SINGLE GANG Box Extender

Includes (2) BE1 Box Extenders, (4) #6-32 x 2" screws

- Levels & supports a wiring device when box is set back from the wall surface
- Fits handy boxes & 4" electrical boxes
- Can be ganged if needed
- *Nivela y soporta un dispositivo de cables cuando la caja de cables está fuera de la pared.*
- *Sirve para caja de mano y cajas eléctricas de 4"*
- *Si es necesario, se puede agrupar.*




BE1-2CS
Arlington

BE1-2CS Easy & safe to install. Prevents broken cover plates!

SINGLE GANG Box Extender

Includes (2) BE1 Box Extenders, (4) #6-32 x 2" screws

- Levels & supports a wiring device when box is set back from the wall surface
- Fits handy boxes & 4" electrical boxes
- Can be ganged if needed
- *Nivela y soporta un dispositivo de cables cuando la caja de cables está fuera de la pared.*
- *Sirve para caja de mano y cajas eléctricas de 4"*
- *Si es necesario, se puede agrupar.*



BE1-2CS
Arlington

BE1-2CS Fácil y seguro de instalar. ¡Evita placas de cubierta rotas!

Extensor de Caja sencilla

Installation instructions
Instrucciones para instalar

1. Turn off power! Remove device if previously installed.
Apague la corriente. Retire el dispositivo, si ya estaba instalado.

2. Insert the  **box x**  **tender into the electrical box.**
Note: adjusts up to 1/2" box extension.
Introduzca el x. tensor de Caja de mpalmes en la caja el trica. Nota: Ajuste hasta 1/2 pul' da la extensión de la caja.

3. Wire the device in  **accordance with manufacturer's instructions. Install the device using the screws provided.**
Note: To install without removing device wires, tilt the device through BE1 at a slight angle, then straighten.
Conecte el dispositivo mediante cables de acuerdo con las instrucciones del fabricante. Instale el dispositivo mediante los tornillos que se suministran. Nota: Para instalar los cables del dispositivo sin tener que quitarlos — incline el dispositivo a través del BE1 en un ligero ángulo y entonces enderécelo.

4. Install the device cover. The level, supported installation is now complete.
Instale la tapa del dispositivo. La instalación de apo o de nivel a est completa.

1 Stauffer Industrial Park
Scranton, PA 18517
800-233-4717
Fax 570-562-0646

Arlington 49636 NRTL/C
© 2000 Arlington Industries, Inc.