



888-501-7899

# AN INSULATION SOLUTION

For every container

## CONTINUOUS INSULATION

SHIPPED DIRECTLY TO YOU

20' STANDARD  
20' HIGHCUBE  
40' STANDARD  
40' HIGHCUBE

### SIZES



## CONNECT WITH US

- Schedule a meeting with Product Support about your shipping container project.
- Request a project quote.
- Order a sample.



## ABOUT THE INSOFAST TEAM

InSoFast has been a leader in innovative, continuous insulation and framing systems for over 20 years. With engineered solutions to save time and money, we pride ourselves on excellent customer service and quality products; 100% made in the USA. Most orders arrive from our USA distribution centers to your doorstep in 7 - 14 days.

InSoFast provides two unique framing and insulation systems designed for shipping containers.

- The X-Bracket System
- InSoFast Panels

Both systems provide superior insulation, comfort, health and durability.

# INSOFAST PANELS

InSofast Insulation Panels are optimized with closed-cell injection molded EPS foam to achieve an energy smart and environmentally friendly solution. They are engineered with the thoughtful details needed to simplify interior or exterior installation with a built-in stud, electrical raceways, rain screen, dual drainage places, and vapor barrier.

## Features:

- Continuous insulation with zero thermal bridging
- Built-in stud every 16"
- Preformed 3/4" electrical raceways
- Adhesive simplicity with Loctite PL Premium 3X
- Moisture and mold resistant
- Rain screen "drain & dry" technology with dual drainage planes
- Compatible with most containers for a low profile fit



Code Report



888-501-7899

Patent Info



2

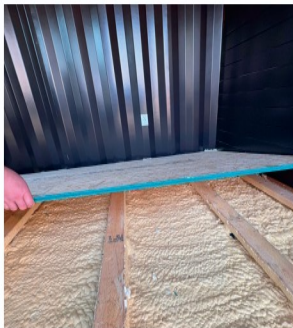
# THE X-BRACKET SYSTEM

The X-Bracket System for shipping containers allows for the highest R-value per inch of any framing system available by eliminating thermal bridging through the insulation. Designed for both interior and exterior applications, the X-Bracket System eliminates the risk of condensation and moisture problems which can lead to mold and rust.

The X-Bracket System can be used with wood furring strips, oriented vertically and horizontally, or with a metal hat channel.

## Features:

- Continuous insulation with zero thermal bridging
- Zero condensation
- Available in a range of depths starting at 2.5"
- Adhesive simplicity with Loctite PL Premium 3X
- Extreme weather resistance
- Built-in electrical clips



Code Report



888-501-7899

Patent Info



2