

THE X-BRACKET SYSTEM

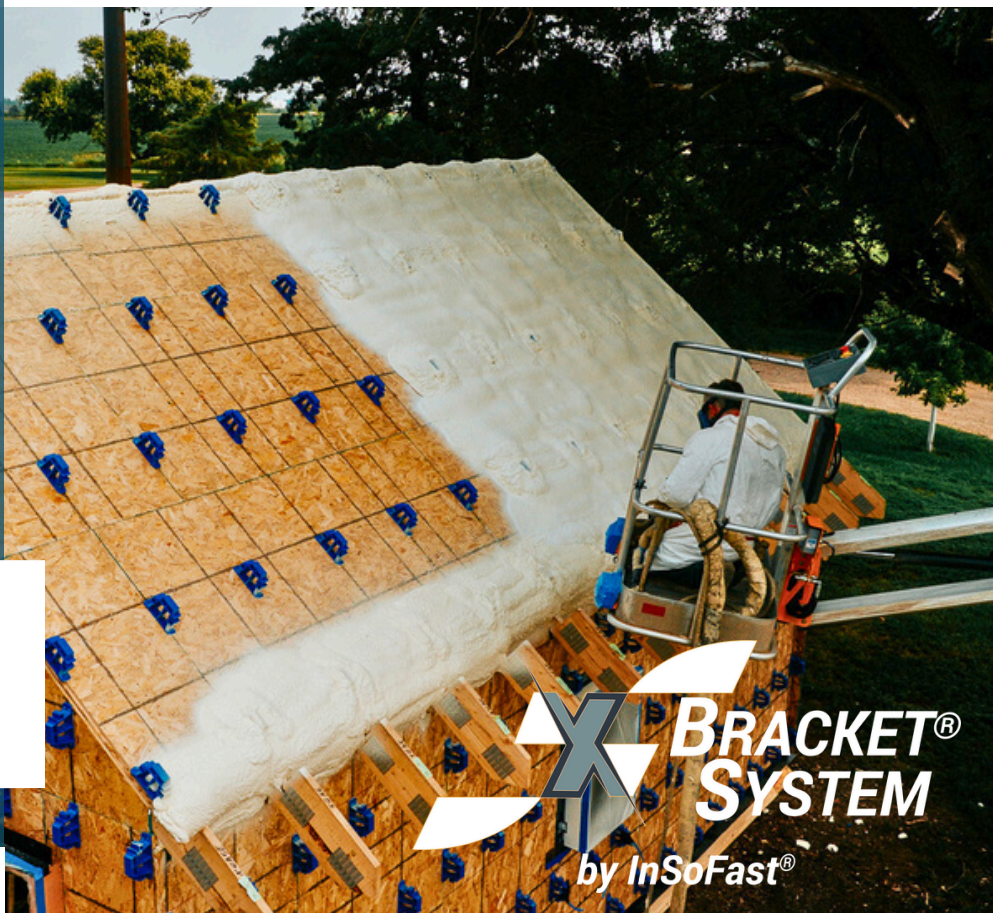
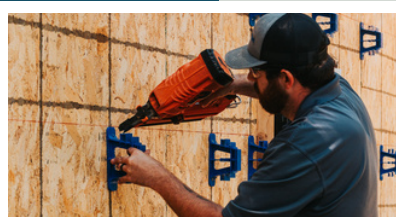
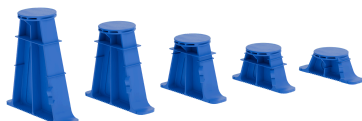
For Closed Cell Spray Foam and Blown-in Insulation

**CONTINUOUS
INSULATION**

SHIPPED
DIRECTLY
TO YOU

2.5"
3.75"
5.5"
7.5"
9.5"

SIZES



ABOUT THE INSOFAST TEAM

InSoFast has been a leader in innovative, continuous insulation and framing systems for over 20 years. With engineered solutions to save time and money, we pride ourselves on excellent customer service and quality products; 100% made in the USA. Most orders arrive from our USA distribution centers to your doorstep in 7 - 14 days.

CONNECT WITH US

- Schedule a meeting with Product Support to talk about the X-Bracket System.
- Request a project quote.
- Order a sample.

OUTSULATION OF THE FUTURE

The X-Bracket System revolutionizes insulation by allowing seamless installation of any closed cell spray foam, or blown-in insulation while eliminating thermal bridging. With pre-engineered strength to withstand extreme wind loads and a system for built-in cross-ventilated moisture control, it's designed for durability and performance.

Easy to install with standard tools, the X-Bracket ensures long-lasting, energy efficient construction without complex framing for new or retrofit projects.

The X-Bracket System features a matrix of brackets designed to secure furring strips to walls, ceilings, roofs, and floors. Suitable for interior and exterior use, it works with wood, steel, or concrete surfaces.



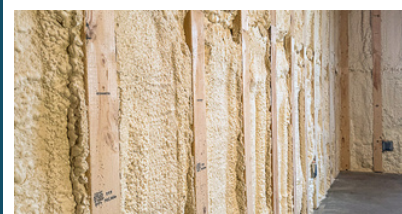
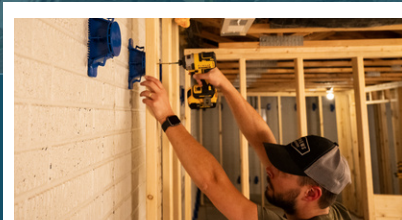
The Ultimate System for New, Retrofit, Exterior, Interior, Walls, Roofs, Floors, Ceilings, Shipping Containers!



THE PERFECT WALL

“The perfect wall is an environmental separator - it has to keep the outside out and the inside in.” - Joe Lstiburek, Ph.D.

Insulating the exterior of a residential, commercial or conex structure with the X-Bracket System follows renowned building scientist, Joe Lstiburek's “Perfect Wall” principles from Building Science Corporation. This method prioritizes placing insulation on the outside to create a seamless barrier against rain, air leaks, vapor, and heat transfer.



Zero thermal bridging to maximize energy efficiency and delivery proven performance with high R-values in support of Net Zero or Passive Home Standards.

Disaster resistance and durable with long term protection from rot, rust, mold, decay, fire, and high speed winds.

Adaptable to your insulation needs with customizable depths and finishing options for energy savings.

The X-Bracket can be nailed or screwed to wood substrates, screwed to steel studs or hat channels or secured to steel shipping containers, concrete surfaces, basements or masonry above grade structures by applying adhesive (Loctite PL Premium 3X) to the back of the bracket.

Compressive Strength: 2,010 lb

Tensile Strength: 590 lb

Wind Resistant to over 250 mph winds

**X-BRACKET
SPECS**