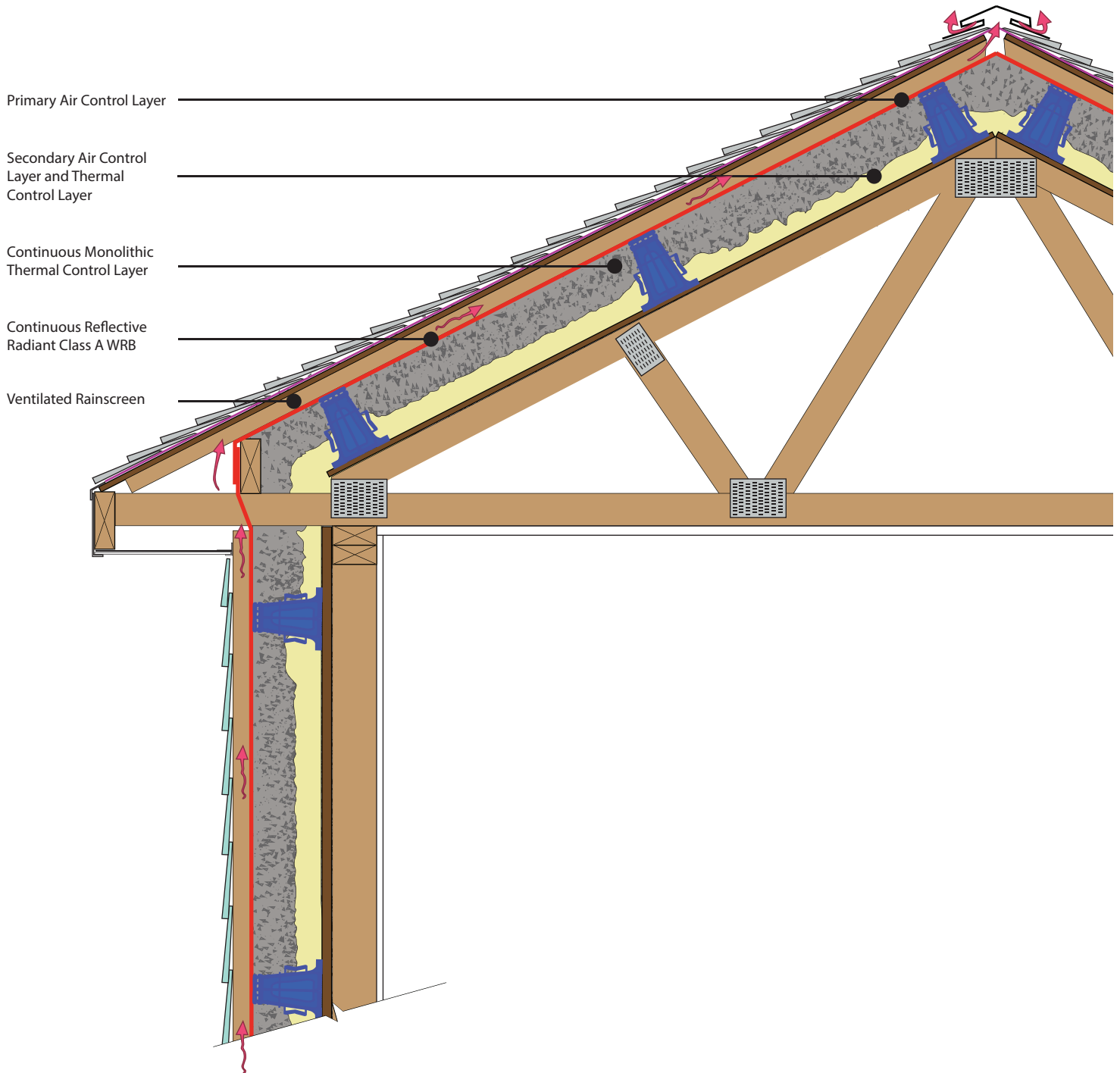




# Top of Wall and Roof with Spray Foam Flash and Rockwool Control Layers



DUE TO VARIANCES IN LOCAL CODES, CONSTRUCTION PRACTICES, AND REQUIREMENTS, ALL DETAILS SHALL BE CONSTRUCTED IN ACCORDANCE WITH SUCH LOCAL CODES, CONSTRUCTION PRACTICES, AND REQUIREMENTS REGARDLESS OF DETAIL CONSTRUCTION SHOWN IN THIS DRAWING. INSOFAST, LLC MAKES NO WARRANTY, EXPRESSED OR IMPLIED. INSOFAST, LLC ASSUMES NO LEGAL LIABILITY OR RESPONSIBILITY FOR THE ACCURACY, COMPLETENESS, OR USEFULNESS OR ANY INFORMATION APPARATUS, PRODUCT OR PROCESS DISCLOSED.



## Top of Wall and Roof with Spray Foam Flash and Rockwool Controls Layers

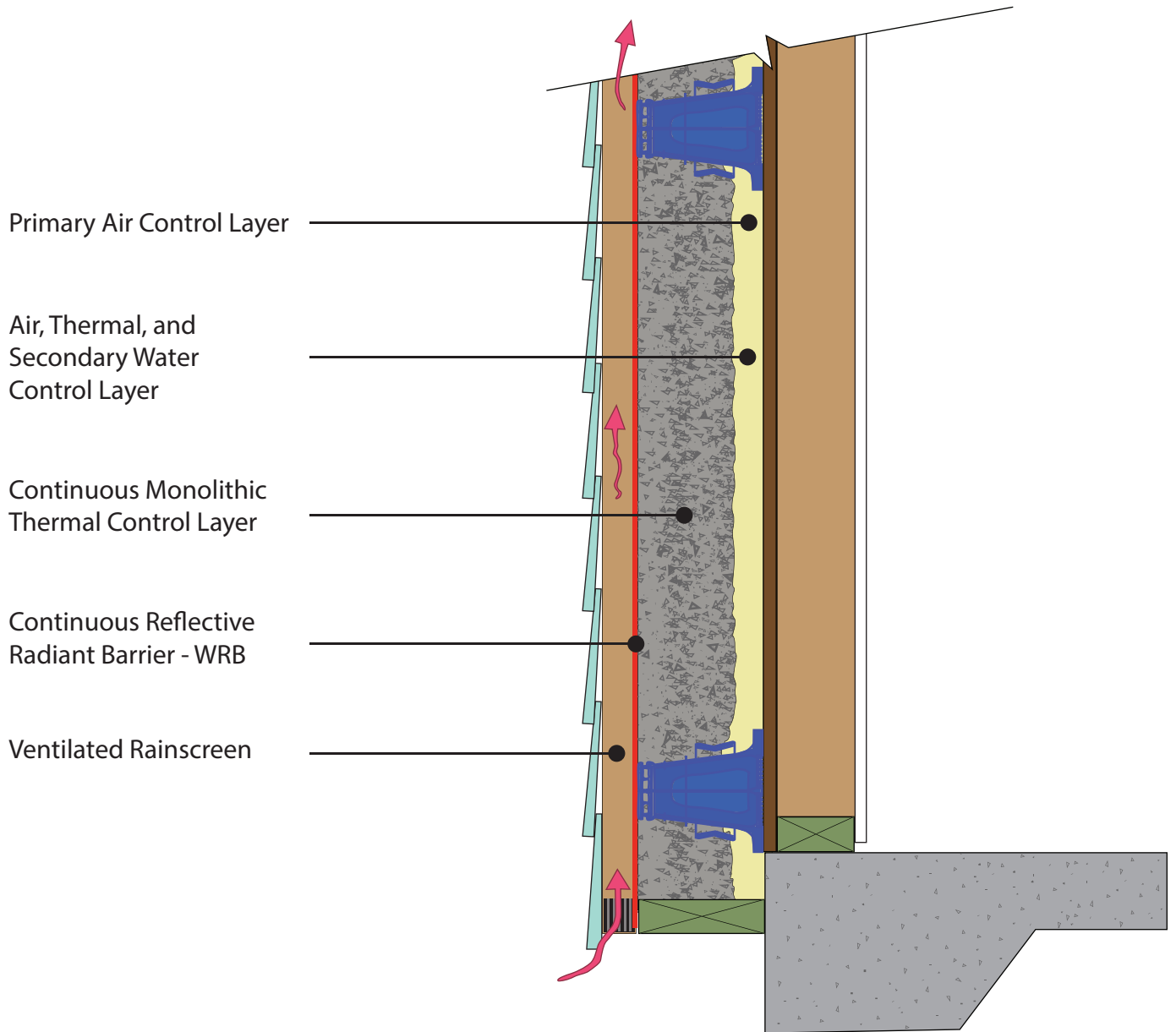
888-501-7899

InSoFast, LLC

[www.InSoFast.com](http://www.InSoFast.com)



# Slab on Grade with Spray Foam Flash and Rockwool Control Layers



DUE TO VARIANCES IN LOCAL CODES, CONSTRUCTION PRACTICES, AND REQUIREMENTS, ALL DETAILS SHALL BE CONSTRUCTED IN ACCORDANCE WITH SUCH LOCAL CODES, CONSTRUCTION PRACTICES, AND REQUIREMENTS REGARDLESS OF DETAIL CONSTRUCTION SHOWN IN THIS DRAWING. INSOFAST, LLC MAKES NO WARRANTY, EXPRESSED OR IMPLIED. INSOFAST, LLC ASSUMES NO LEGAL LIABILITY OR RESPONSIBILITY FOR THE ACCURACY, COMPLETENESS, OR USEFULNESS OR ANY INFORMATION APPARATUS, PRODUCT OR PROCESS DISCLOSED.



## Slab on Grade with Spray Foam Flash and Rockwool Control Layers

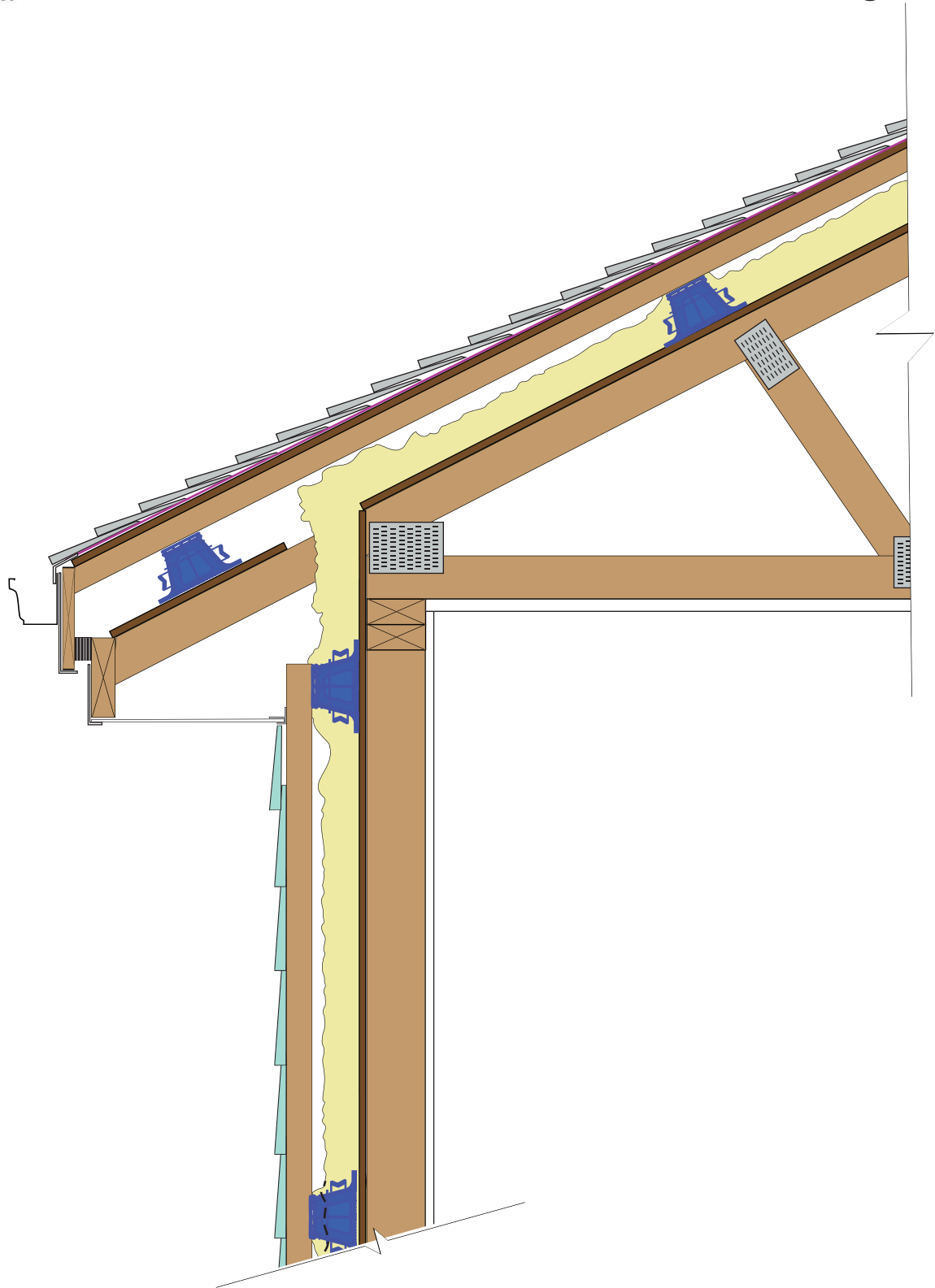
888-501-7899

InSoFast, LLC

www.InSoFast.com



# X-Bracket Retrofit Roof with Stepped Fascia Standard Overhang



DUE TO VARIANCES IN LOCAL CODES, CONSTRUCTION\*  
REQUIREMENTS REGARDLESS OF DETAIL CONSTRUCTION SHOWN IN THIS DRAWING. INSOFAST, LLC MAKES NO WARRANTY, EXPRESSED OR IMPLIED. INSOFAST, LLC ASSUMES NO LEGAL LIABILITY OR RESPONSIBILITY  
FOR THE ACCURACY, COMPLETENESS, OR USEFULNESS OR ANY INFORMATION APPARATUS, PRODUCT OR PROCESS DISCLOSED.

ONSTRUCTED IN ACCORDANCE WITH SUCH LOCAL CODES, CONSTRUCTION PRACTICES, AND  
REQUIREMENTS REGARDLESS OF DETAIL CONSTRUCTION SHOWN IN THIS DRAWING. INSOFAST, LLC MAKES NO WARRANTY, EXPRESSED OR IMPLIED. INSOFAST, LLC ASSUMES NO LEGAL LIABILITY OR RESPONSIBILITY  
FOR THE ACCURACY, COMPLETENESS, OR USEFULNESS OR ANY INFORMATION APPARATUS, PRODUCT OR PROCESS DISCLOSED.



## X-Bracket Retrofit Roof with Stepped Fascia Standard Overhang

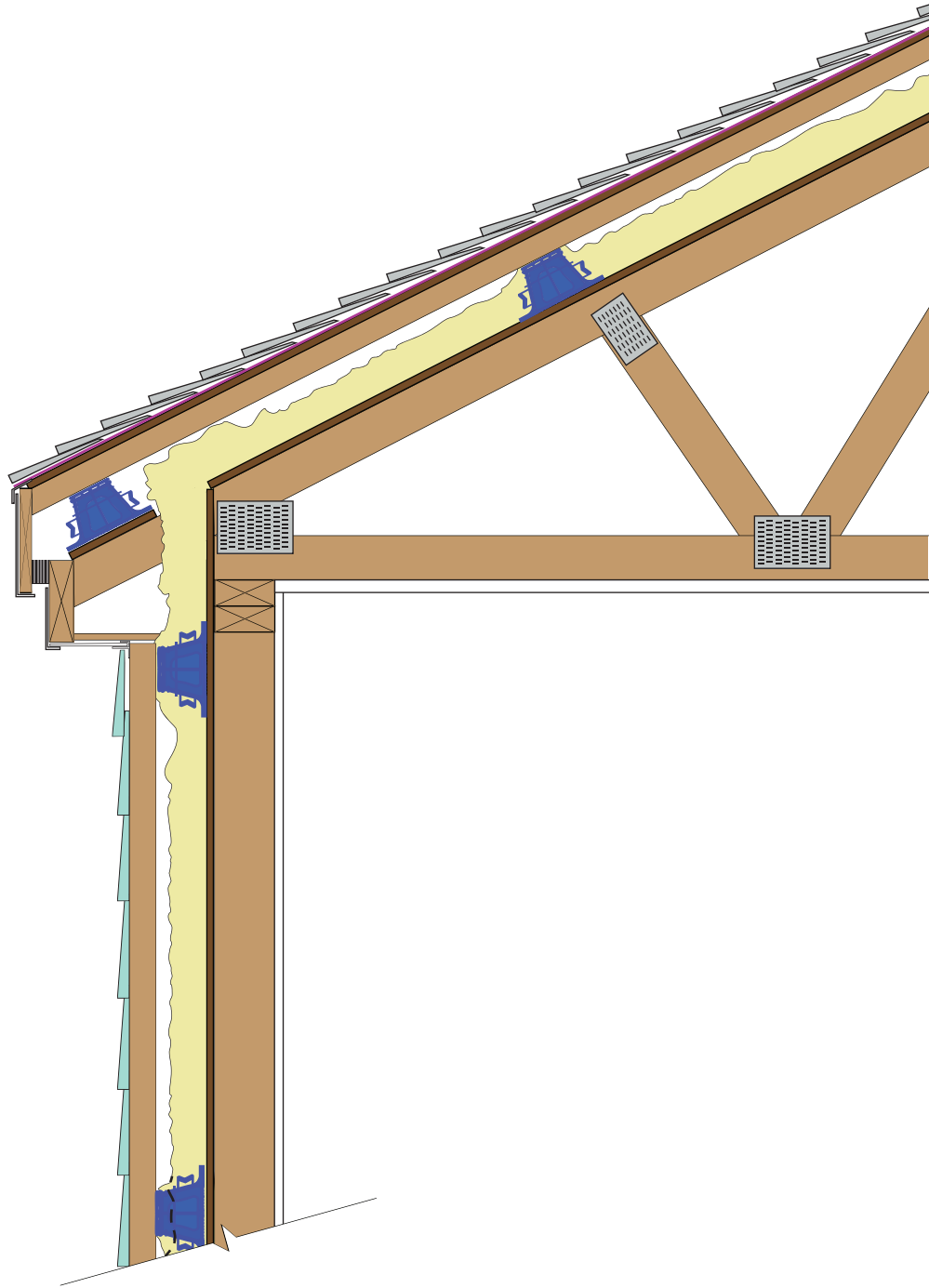
888-501-7899

InSoFast, LLC

[www.InSoFast.com](http://www.InSoFast.com)



# X-Bracket Retrofit Roof with Stepped Fascia



DUE TO VARIANCES IN LOCAL CODES, CONSTRUCTION PRACTICES, AND REQUIREMENTS, ALL DETAILS SHALL BE CONSTRUCTED IN ACCORDANCE WITH SUCH LOCAL CODES, CONSTRUCTION PRACTICES, AND REQUIREMENTS REGARDLESS OF DETAIL CONSTRUCTION SHOWN IN THIS DRAWING. INSOFAS, LLC MAKES NO WARRANTY, EXPRESSED OR IMPLIED. INSOFAS, LLC ASSUMES NO LEGAL LIABILITY OR RESPONSIBILITY FOR THE ACCURACY, COMPLETENESS, OR USEFULNESS OR ANY INFORMATION APPARATUS, PRODUCT OR PROCESS DISCLOSED.



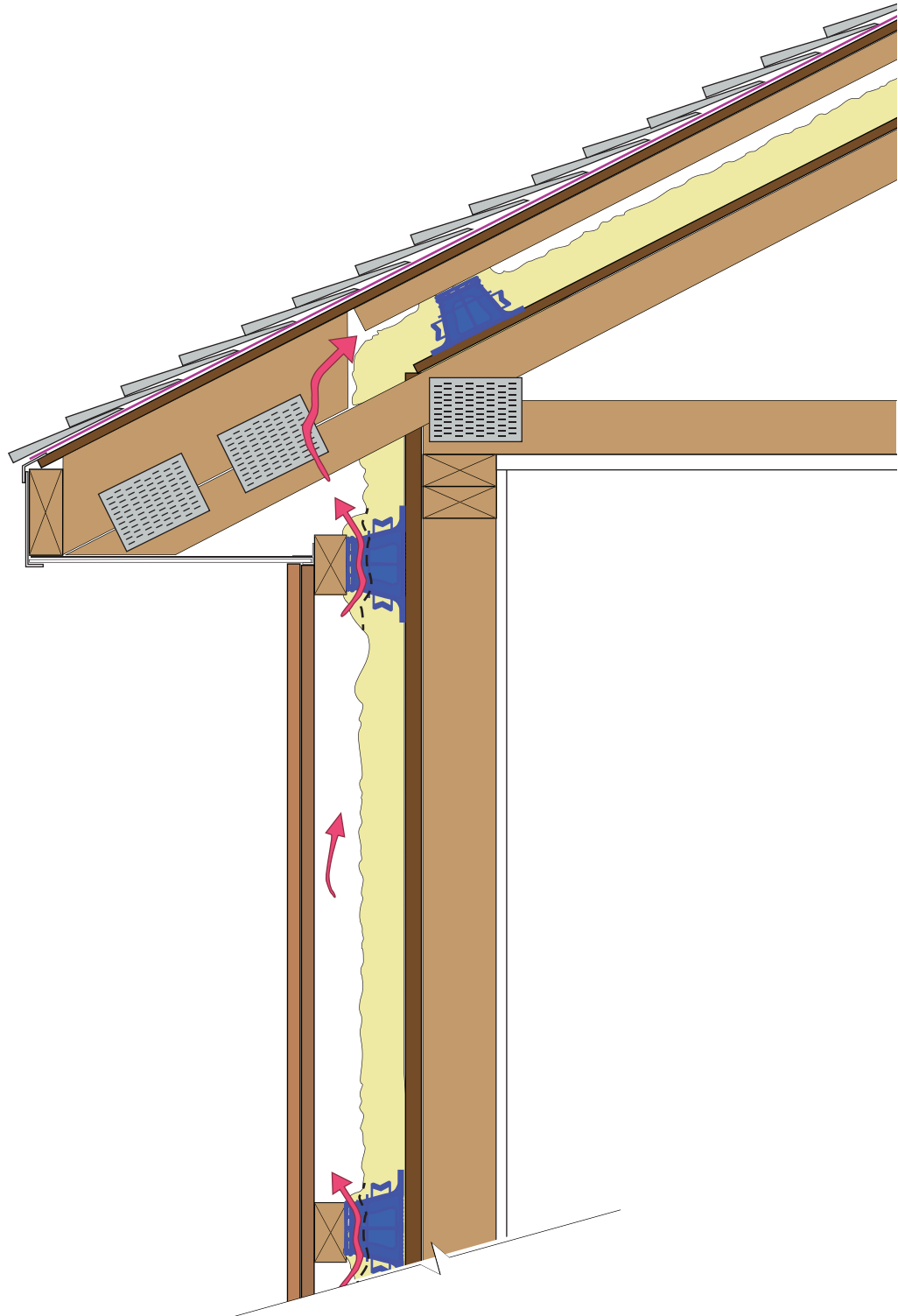
## X-Bracket Retrofit Roof with Stepped Fascia

888-501-7899

InSoFast, LLC

[www.InSoFast.com](http://www.InSoFast.com)

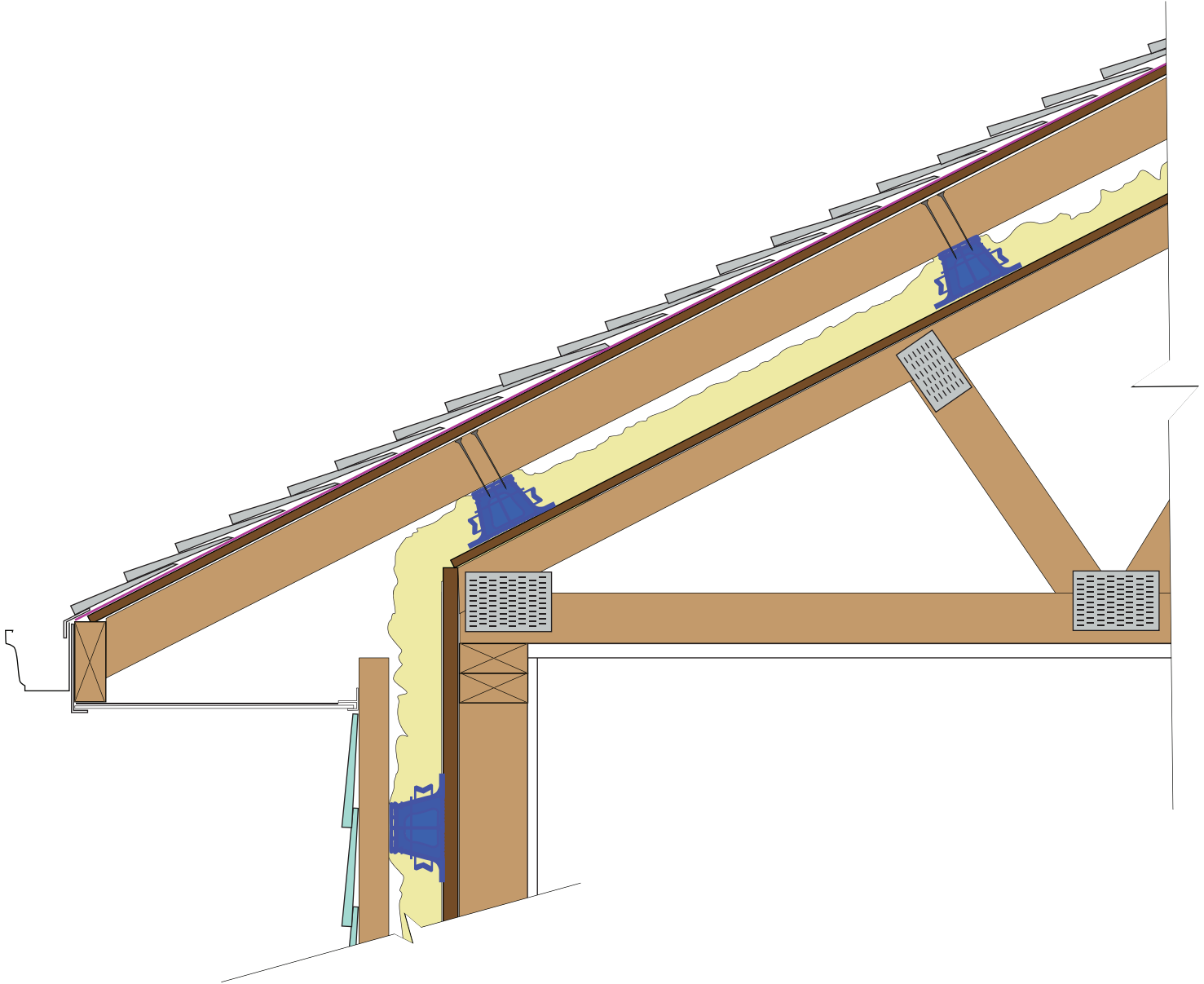
# Raised Tail Trusses for X-Bracket Roof



DUE TO VARIANCES IN LOCAL CODES, CONSTRUCTION PRACTICES, AND REQUIREMENTS, ALL DETAILS SHALL BE CONSTRUCTED IN ACCORDANCE WITH SUCH LOCAL CODES, CONSTRUCTION PRACTICES, AND REQUIREMENTS REGARDLESS OF DETAIL CONSTRUCTION SHOWN IN THIS DRAWING. INSOFAST, LLC MAKES NO WARRANTY, EXPRESSED OR IMPLIED. INSOFAST, LLC ASSUMES NO LEGAL LIABILITY OR RESPONSIBILITY FOR THE ACCURACY, COMPLETENESS, OR USEFULNESS OR ANY INFORMATION APPARATUS, PRODUCT OR PROCESS DISCLOSED.



# Standard Overhang with 2x4 Rafter Fastened to X-Bracket



DUE TO VARIANCES IN LOCAL CODES, CONSTRUCTION PRACTICES, AND REQUIREMENTS, ALL DETAILS SHALL BE CONSTRUCTED IN ACCORDANCE WITH SUCH LOCAL CODES, CONSTRUCTION PRACTICES, AND REQUIREMENTS REGARDLESS OF DETAIL CONSTRUCTION SHOWN IN THIS DRAWING. INSOFAST, LLC MAKES NO WARRANTY, EXPRESSED OR IMPLIED. INSOFAST, LLC ASSUMES NO LEGAL LIABILITY OR RESPONSIBILITY FOR THE ACCURACY, COMPLETENESS, OR USEFULNESS OR ANY INFORMATION APPARATUS, PRODUCT OR PROCESS DISCLOSED.



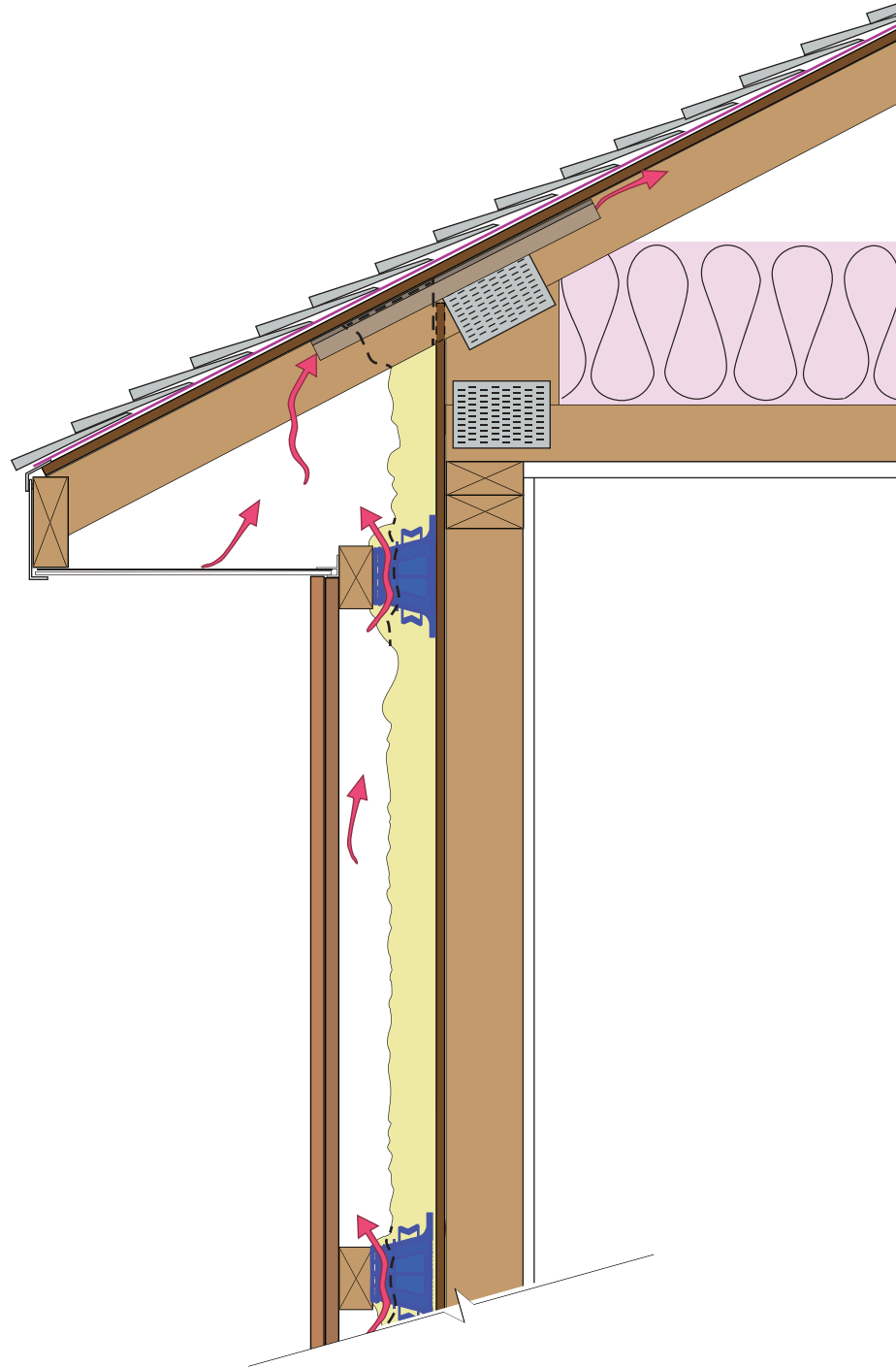
## Standard Overhang with 2x4 Rafter Fastened to X-Brackets

888-501-7899

InSoFast, LLC

[www.InSoFast.com](http://www.InSoFast.com)

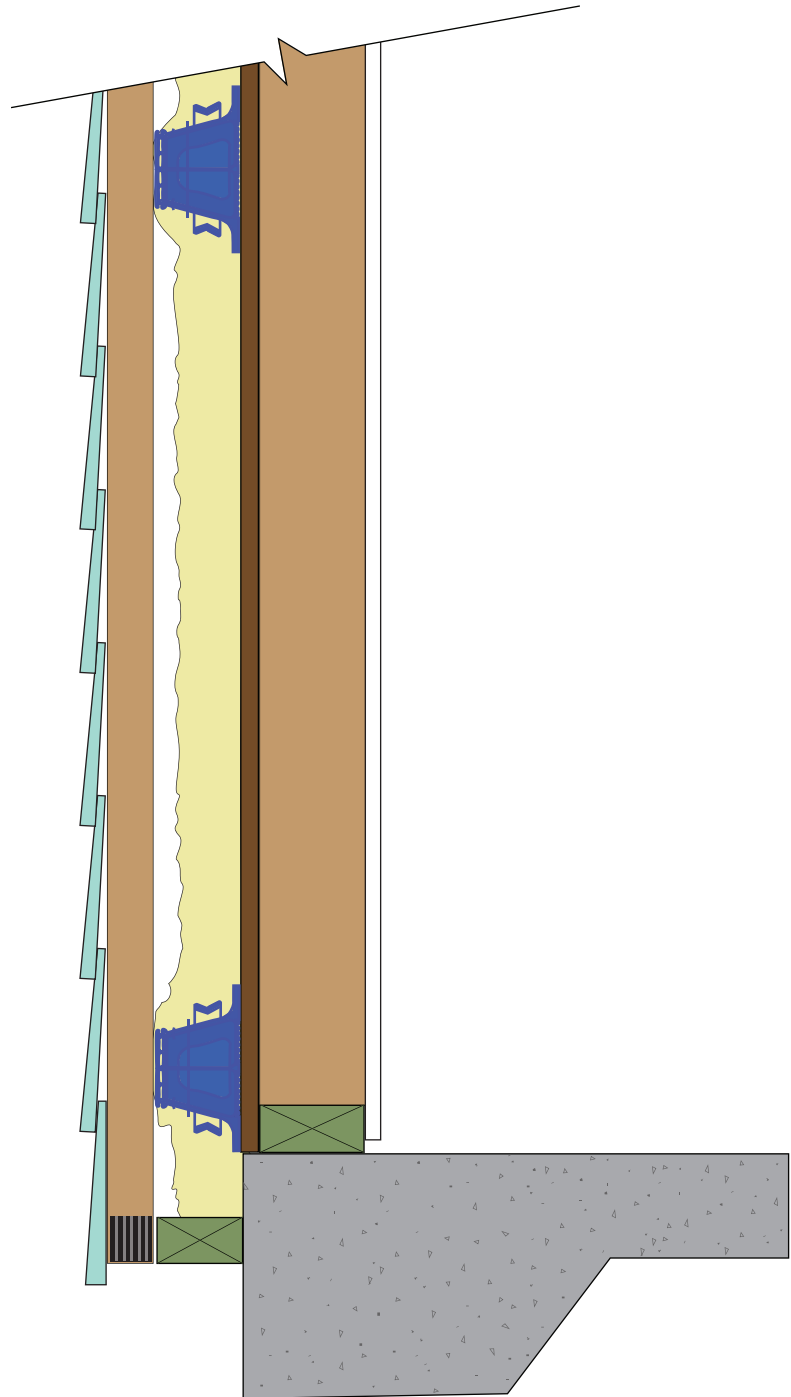
# Top of Wall with Horizontal Framing - No Roof



DUE TO VARIANCES IN LOCAL CODES, CONSTRUCTION PRACTICES, AND REQUIREMENTS, ALL DETAILS SHALL BE CONSTRUCTED IN ACCORDANCE WITH SUCH LOCAL CODES, CONSTRUCTION PRACTICES, AND REQUIREMENTS REGARDLESS OF DETAIL CONSTRUCTION SHOWN IN THIS DRAWING. INSOFAST, LLC MAKES NO WARRANTY, EXPRESSED OR IMPLIED. INSOFAST, LLC ASSUMES NO LEGAL LIABILITY OR RESPONSIBILITY FOR THE ACCURACY, COMPLETENESS, OR USEFULNESS OR ANY INFORMATION APPARATUS, PRODUCT OR PROCESS DISCLOSED.



# X-Bracket Bottom of Wall Detail with Spray Foam and Coravent



DUE TO VARIANCES IN LOCAL CODES, CONSTRUCTION PRACTICES, AND REQUIREMENTS, ALL DETAILS SHALL BE CONSTRUCTED IN ACCORDANCE WITH SUCH LOCAL CODES, CONSTRUCTION PRACTICES, AND REQUIREMENTS REGARDLESS OF DETAIL CONSTRUCTION SHOWN IN THIS DRAWING. INSOFAS, LLC MAKES NO WARRANTY, EXPRESSED OR IMPLIED. INSOFAS, LLC ASSUMES NO LEGAL LIABILITY OR RESPONSIBILITY FOR THE ACCURACY, COMPLETENESS, OR USEFULNESS OR ANY INFORMATION APPARATUS, PRODUCT OR PROCESS DISCLOSED.



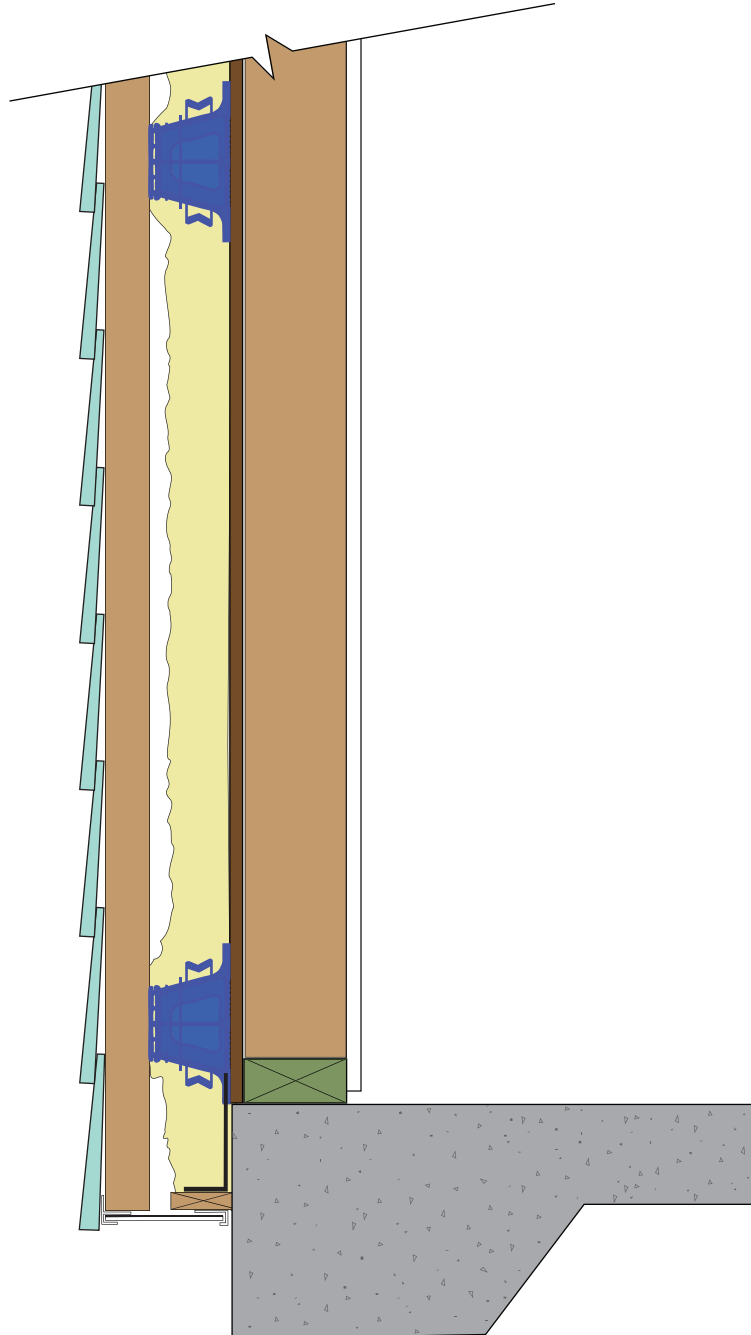
## X-Bracket Bottom of Wall Detail with Spray Foam and Coravent

888-501-7899

InSoFast, LLC

[www.InSoFast.com](http://www.InSoFast.com)

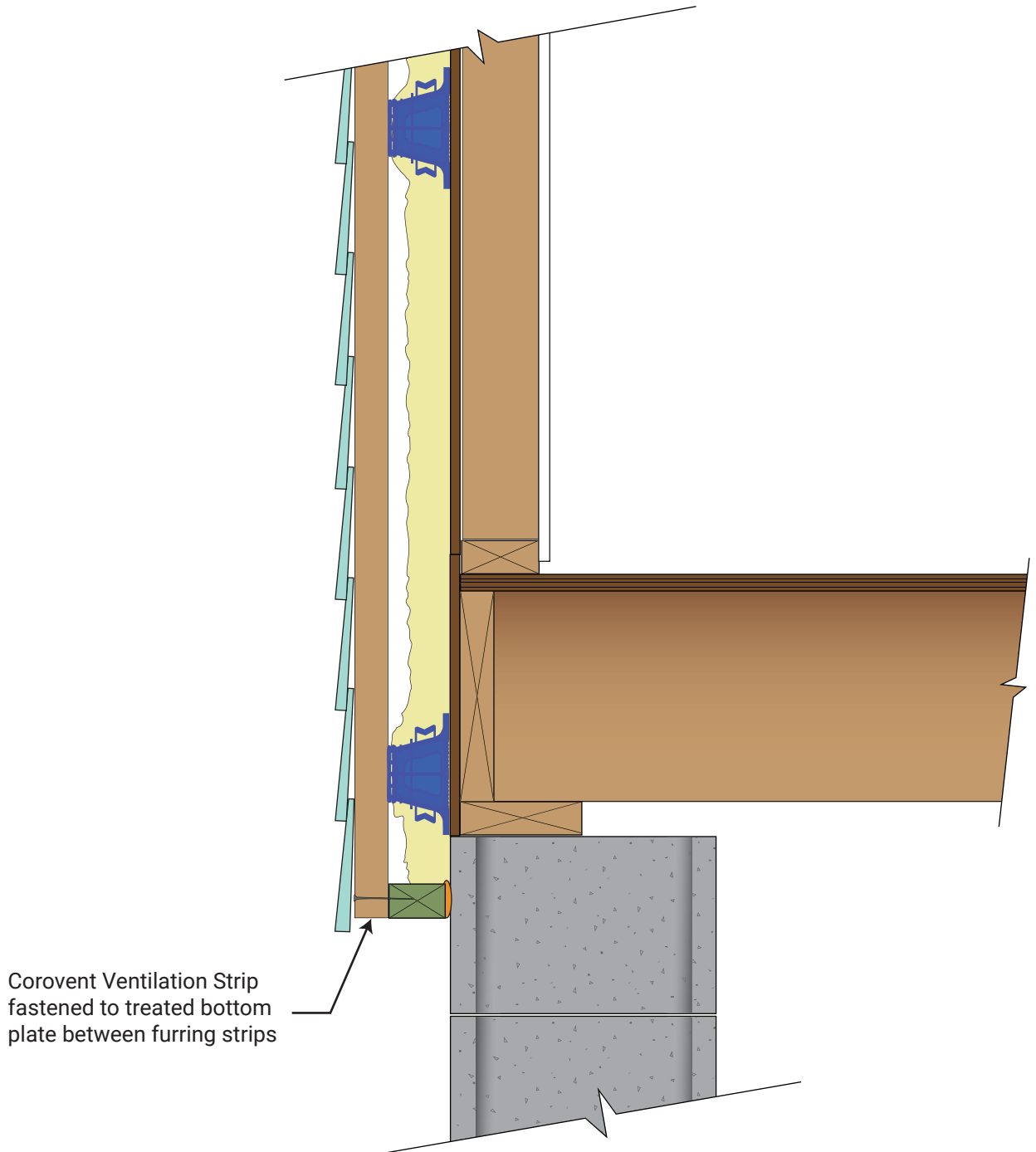
# X-Bracket with Bottom of Wall Detail with "L" Bracket



DUE TO VARIANCES IN LOCAL CODES, CONSTRUCTION PRACTICES, AND REQUIREMENTS, ALL DETAILS SHALL BE CONSTRUCTED IN ACCORDANCE WITH SUCH LOCAL CODES, CONSTRUCTION PRACTICES, AND REQUIREMENTS REGARDLESS OF DETAIL CONSTRUCTION SHOWN IN THIS DRAWING. INSOFAST, LLC MAKES NO WARRANTY, EXPRESSED OR IMPLIED. INSOFAST, LLC ASSUMES NO LEGAL LIABILITY OR RESPONSIBILITY FOR THE ACCURACY, COMPLETENESS, OR USEFULNESS OR ANY INFORMATION APPARATUS, PRODUCT OR PROCESS DISCLOSED.



# X-Bracket Exterior of Wall Rim Joist Detail with Spray Foam and Coravent



Corovent Ventilation Strip fastened to treated bottom plate between furring strips

DUE TO VARIANCES IN LOCAL CODES, CONSTRUCTION PRACTICES, AND REQUIREMENTS, ALL DETAILS SHALL BE CONSTRUCTED IN ACCORDANCE WITH SUCH LOCAL CODES, CONSTRUCTION PRACTICES, AND REQUIREMENTS REGARDLESS OF DETAIL CONSTRUCTION SHOWN IN THIS DRAWING. INSOFAST, LLC MAKES NO WARRANTY, EXPRESSED OR IMPLIED. INSOFAST, LLC ASSUMES NO LEGAL LIABILITY OR RESPONSIBILITY FOR THE ACCURACY, COMPLETENESS, OR USEFULNESS OR ANY INFORMATION APPARATUS, PRODUCT OR PROCESS DISCLOSED.



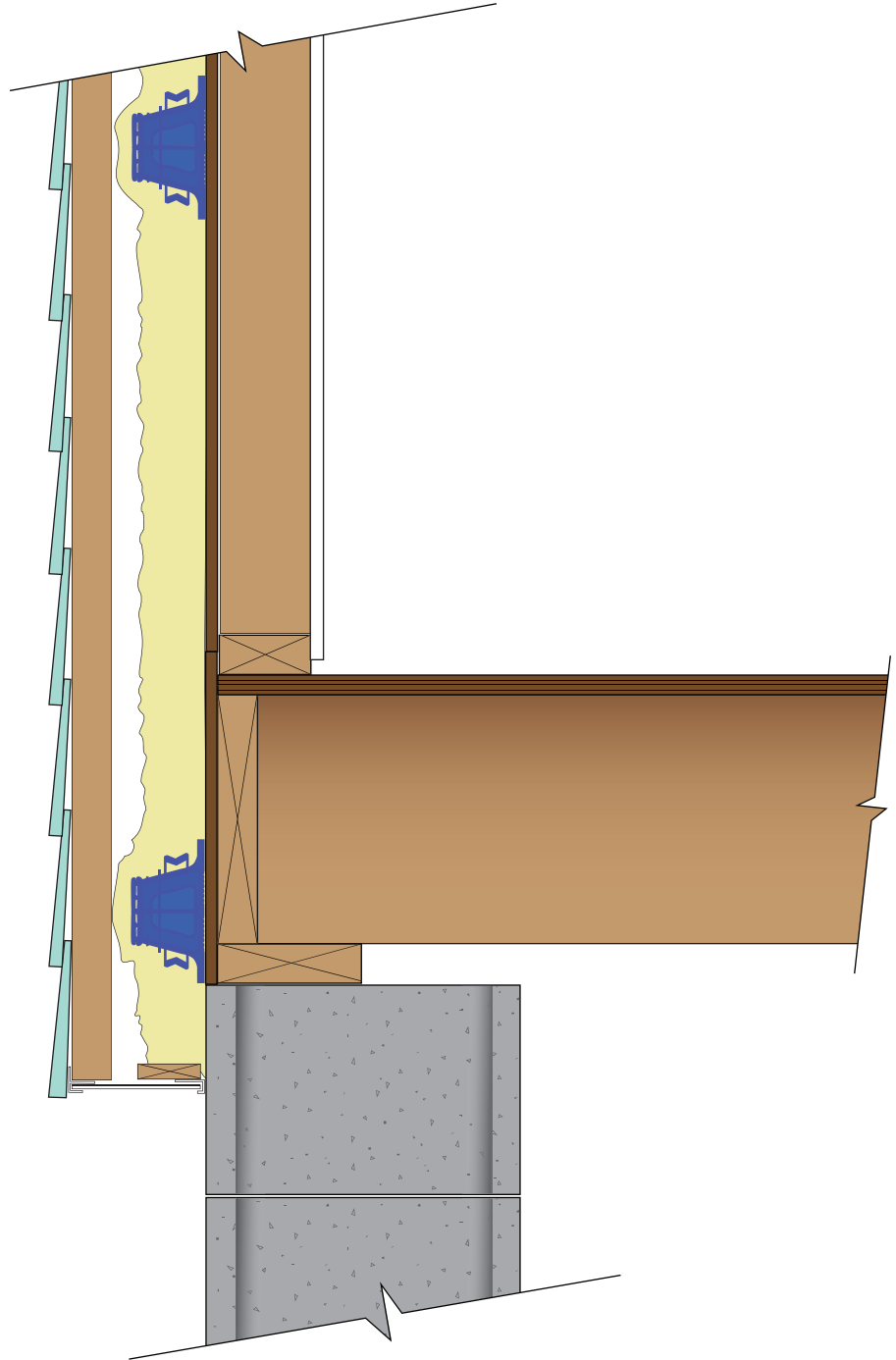
## X-Bracket Bottom of Wall Rim Joist Detail with Spray Foam and Coravent

888-501-7899

InSoFast, LLC

[www.InSoFast.com](http://www.InSoFast.com)

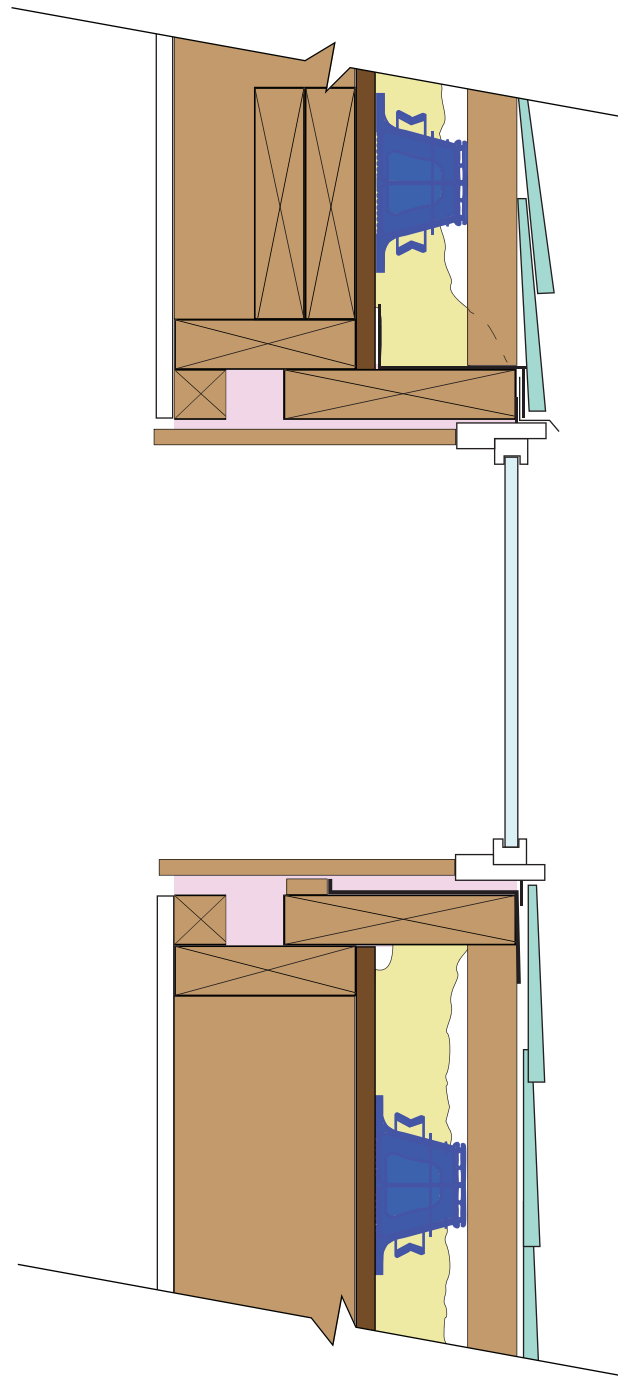
# X-Bracket Retrofit Bottom of Wall Detail



DUE TO VARIANCES IN LOCAL CODES, CONSTRUCTION PRACTICES, AND REQUIREMENTS, ALL DETAILS SHALL BE CONSTRUCTED IN ACCORDANCE WITH SUCH LOCAL CODES, CONSTRUCTION PRACTICES, AND REQUIREMENTS REGARDLESS OF DETAIL CONSTRUCTION SHOWN IN THIS DRAWING. INSOFAST, LLC MAKES NO WARRANTY, EXPRESSED OR IMPLIED. INSOFAST, LLC ASSUMES NO LEGAL LIABILITY OR RESPONSIBILITY FOR THE ACCURACY, COMPLETENESS, OR USEFULNESS OR ANY INFORMATION APPARATUS, PRODUCT OR PROCESS DISCLOSED.



# Outset Window Details with X-Bracket by InSoFast



DUE TO VARIANCES IN LOCAL CODES, CONSTRUCTION PRACTICES, AND REQUIREMENTS, ALL DETAILS SHALL BE CONSTRUCTED IN ACCORDANCE WITH SUCH LOCAL CODES, CONSTRUCTION PRACTICES, AND REQUIREMENTS REGARDLESS OF DETAIL CONSTRUCTION SHOWN IN THIS DRAWING. INSOFAST, LLC MAKES NO WARRANTY, EXPRESSED OR IMPLIED. INSOFAST, LLC ASSUMES NO LEGAL LIABILITY OR RESPONSIBILITY FOR THE ACCURACY, COMPLETENESS, OR USEFULNESS OR ANY INFORMATION APPARATUS, PRODUCT OR PROCESS DISCLOSED.



## Outset Window Details with X-Bracket by InSoFast

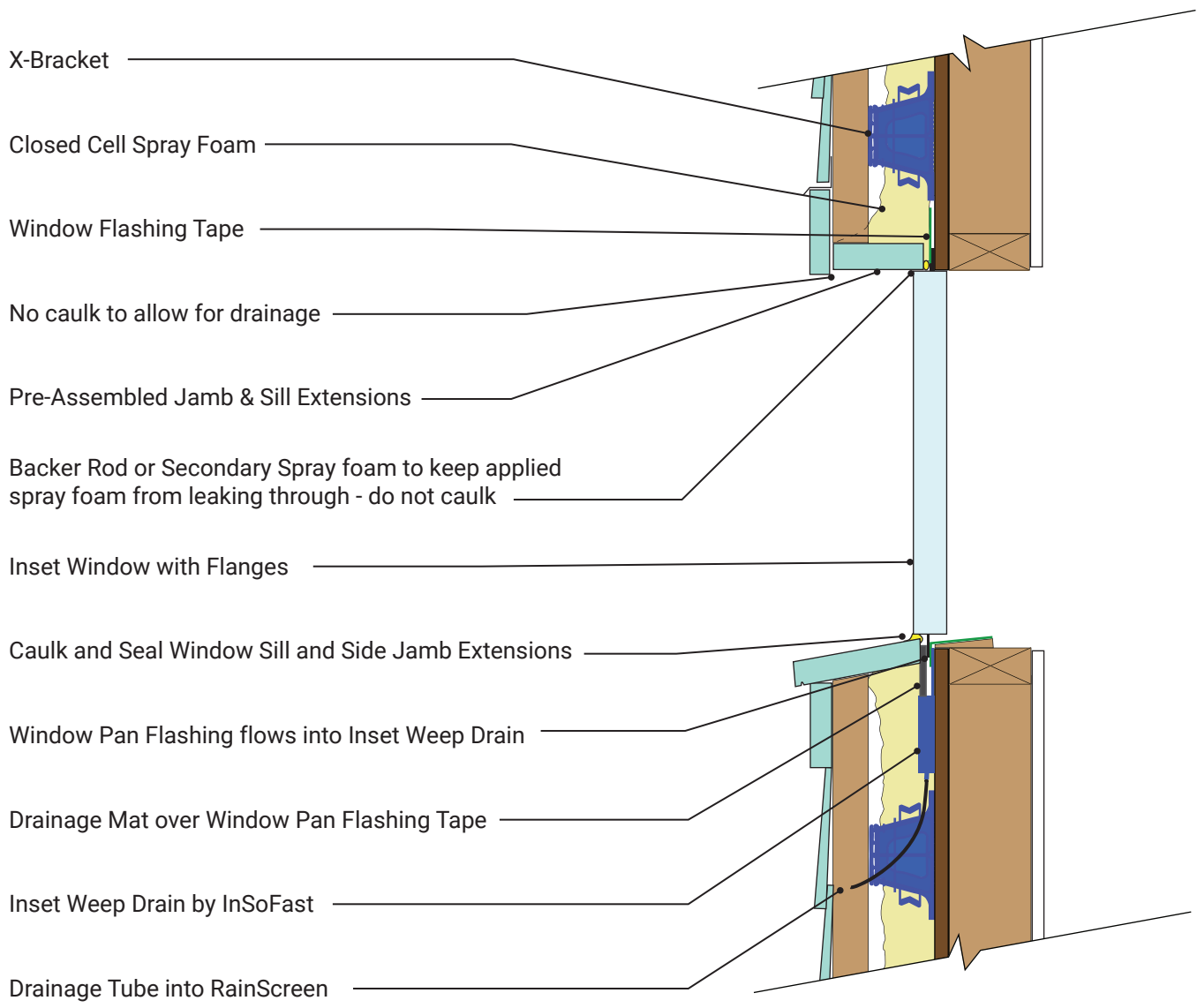
888-501-7899

InSoFast, LLC

[www.InSoFast.com](http://www.InSoFast.com)



# Inset Window Details with X-Bracket by InSoFast



DUE TO VARIANCES IN LOCAL CODES, CONSTRUCTION PRACTICES, AND REQUIREMENTS, ALL DETAILS SHALL BE CONSTRUCTED IN ACCORDANCE WITH SUCH LOCAL CODES, CONSTRUCTION PRACTICES, AND REQUIREMENTS REGARDLESS OF DETAIL CONSTRUCTION SHOWN IN THIS DRAWING. INSOFAST, LLC MAKES NO WARRANTY, EXPRESSED OR IMPLIED. INSOFAST, LLC ASSUMES NO LEGAL LIABILITY OR RESPONSIBILITY FOR THE ACCURACY, COMPLETENESS, OR USEFULNESS OR ANY INFORMATION APPARATUS, PRODUCT OR PROCESS DISCLOSED.

## INSET WINDOW DETAILS WITH X-BRACKET



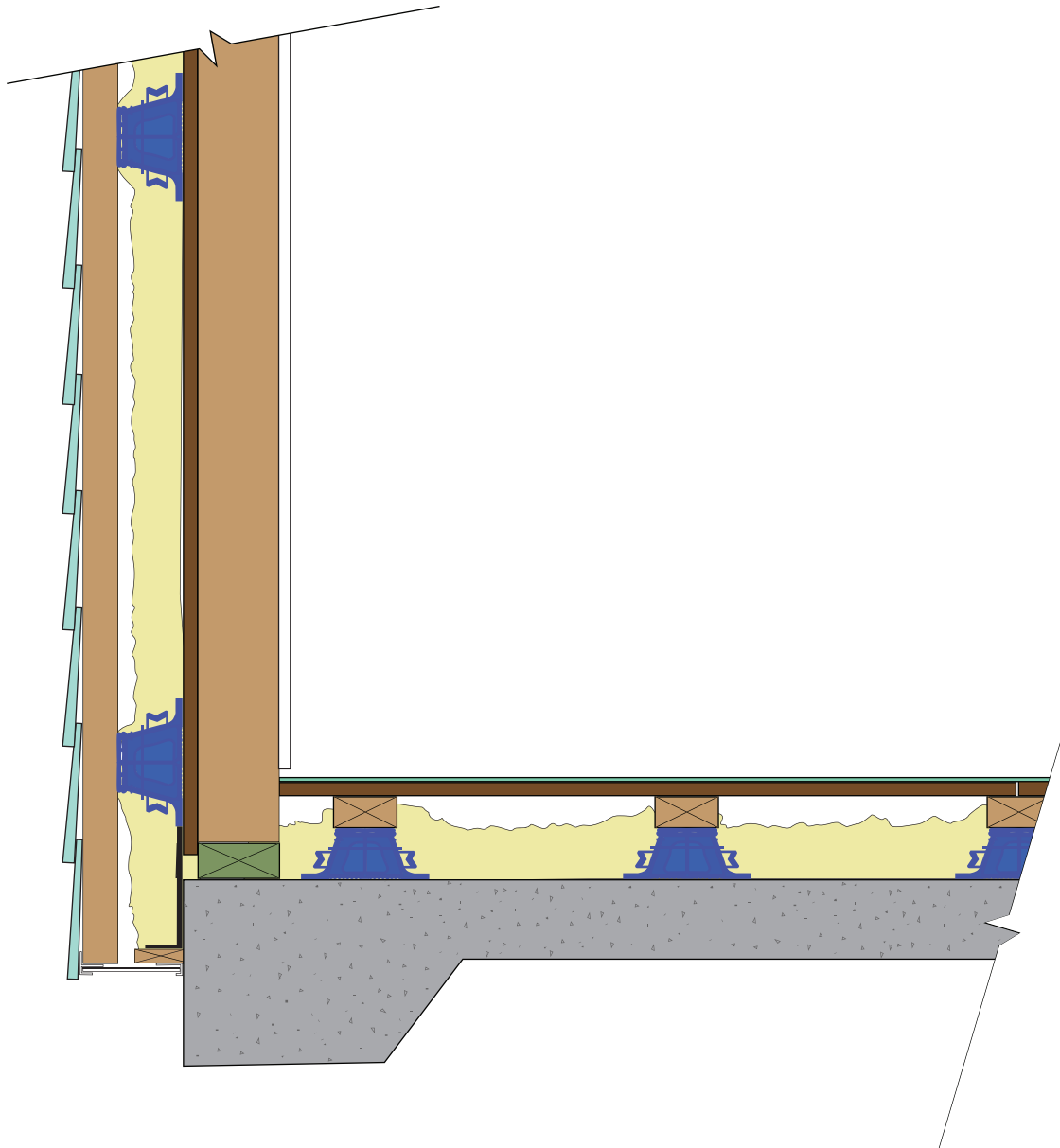
888-501-7899

InSoFast, LLC

[www.InSoFast.com](http://www.InSoFast.com)



# X-Bracket on the Floor with Spray Foam



DUE TO VARIANCES IN LOCAL CODES, CONSTRUCTION PRACTICES, AND REQUIREMENTS, ALL DETAILS SHALL BE CONSTRUCTED IN ACCORDANCE WITH SUCH LOCAL CODES, CONSTRUCTION PRACTICES, AND REQUIREMENTS REGARDLESS OF DETAIL CONSTRUCTION SHOWN IN THIS DRAWING. INSOFAST, LLC MAKES NO WARRANTY, EXPRESSED OR IMPLIED. INSOFAST, LLC ASSUMES NO LEGAL LIABILITY OR RESPONSIBILITY FOR THE ACCURACY, COMPLETENESS, OR USEFULNESS OR ANY INFORMATION APPARATUS, PRODUCT OR PROCESS DISCLOSED.



## X-Bracket on the Floor with Spray Foam

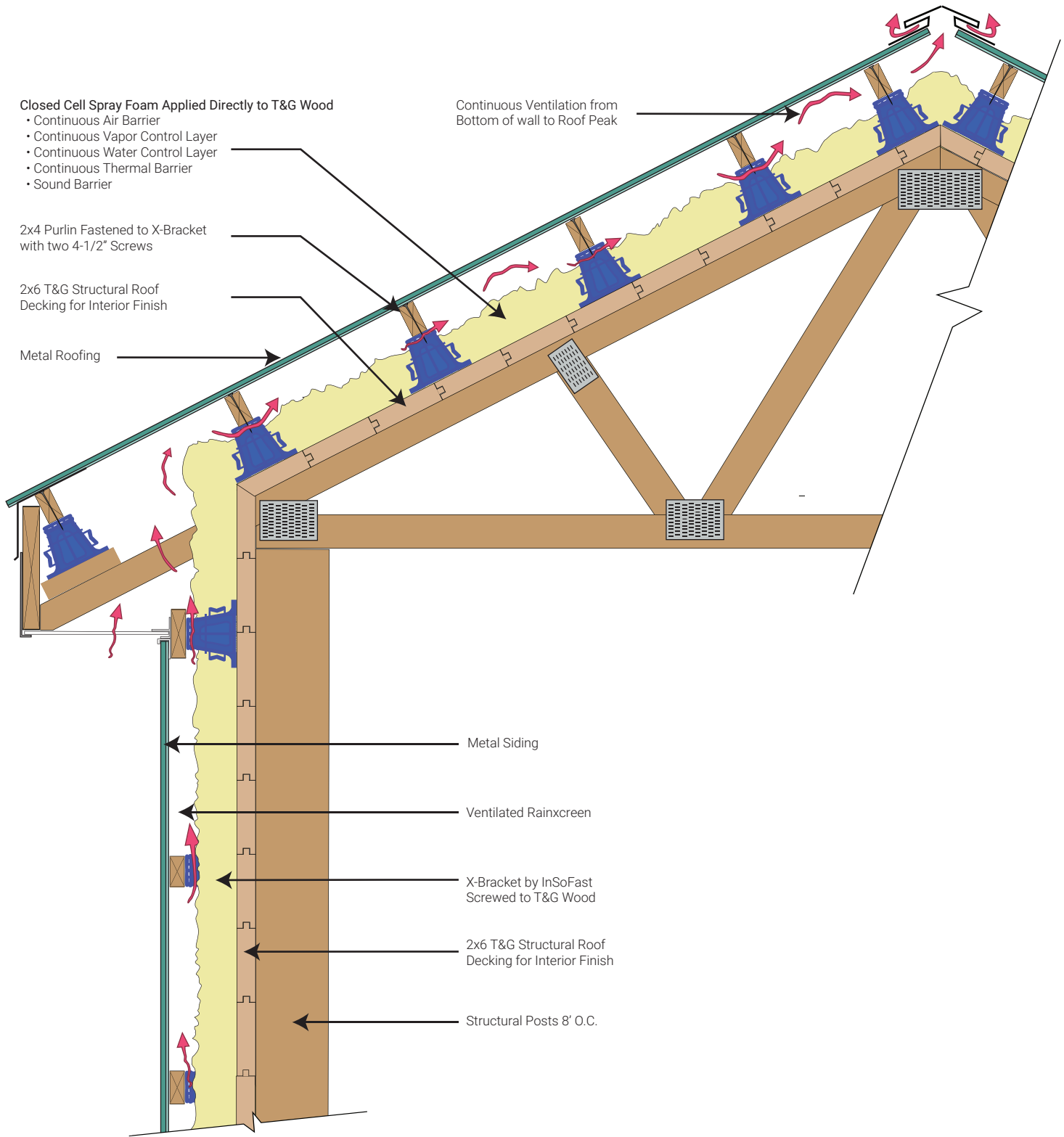
888-501-7899

InSoFast, LLC

[www.InSoFast.com](http://www.InSoFast.com)



# X-Bracket Barndo Top of Wall and Roof Detail with Spray Foam



DUE TO VARIANCES IN LOCAL CODES, CONSTRUCTION PRACTICES, AND REQUIREMENTS, ALL DETAILS SHALL BE CONSTRUCTED IN ACCORDANCE WITH SUCH LOCAL CODES, CONSTRUCTION PRACTICES, AND REQUIREMENTS REGARDLESS OF DETAIL CONSTRUCTION SHOWN IN THIS DRAWING. INSOFAST, LLC MAKES NO WARRANTY, EXPRESSED OR IMPLIED. INSOFAST, LLC ASSUMES NO LEGAL LIABILITY OR RESPONSIBILITY FOR THE ACCURACY, COMPLETENESS, OR USEFULNESS OR ANY INFORMATION APPARATUS, PRODUCT OR PROCESS DISCLOSED.



## X-Bracket Barndo Top of Wall and Roof Detail with Spray Foam

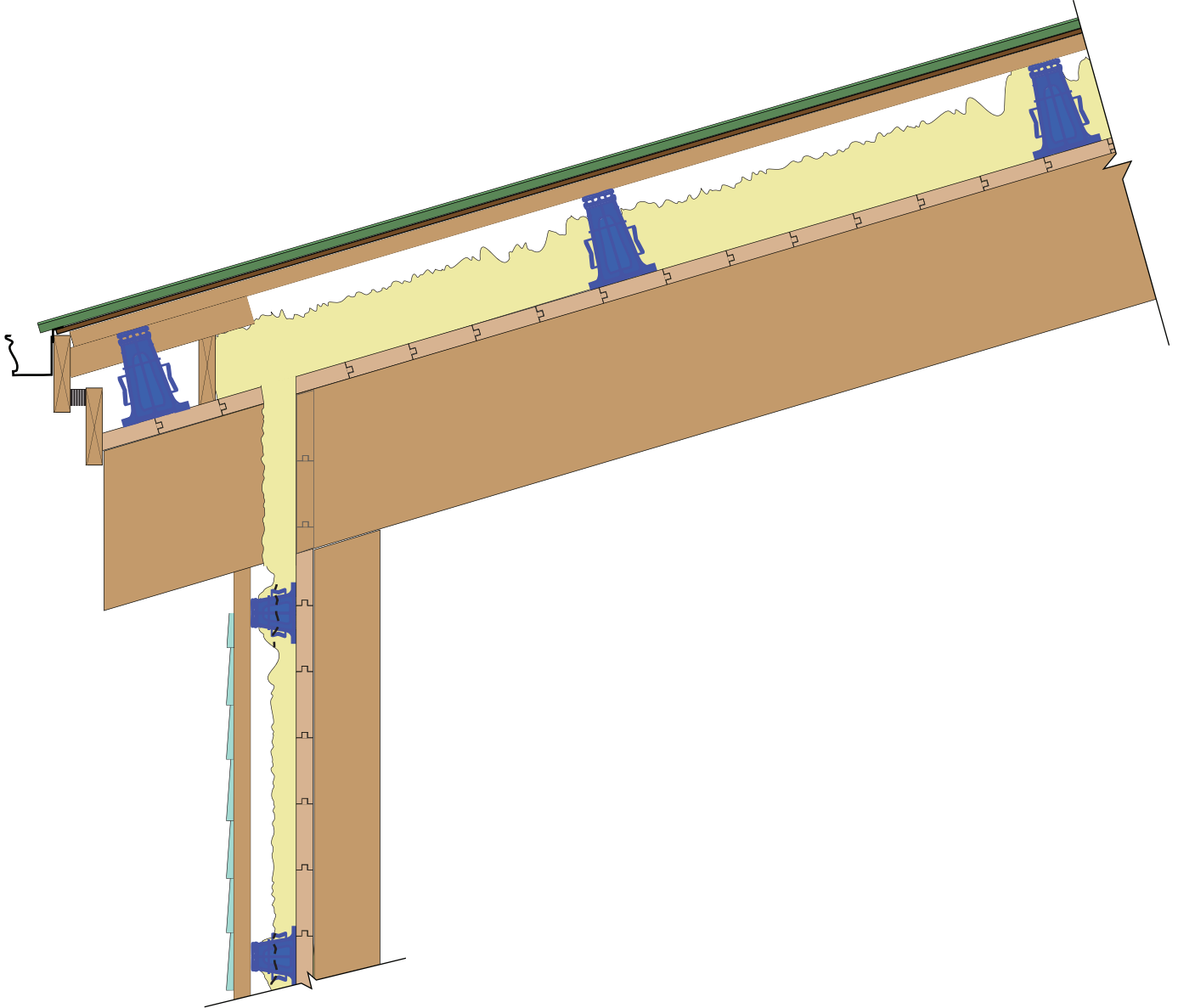
888-501-7899

InSoFast, LLC

www.InSoFast.com



# X-Bracket Timberframe Mono Roof with Spray Foam



DUE TO VARIANCES IN LOCAL CODES, CONSTRUCTION PRACTICES, AND REQUIREMENTS, ALL DETAILS SHALL BE CONSTRUCTED IN ACCORDANCE WITH SUCH LOCAL CODES, CONSTRUCTION PRACTICES, AND REQUIREMENTS REGARDLESS OF DETAIL CONSTRUCTION SHOWN IN THIS DRAWING. INSOFAST, LLC MAKES NO WARRANTY, EXPRESSED OR IMPLIED. INSOFAST, LLC ASSUMES NO LEGAL LIABILITY OR RESPONSIBILITY FOR THE ACCURACY, COMPLETENESS, OR USEFULNESS OR ANY INFORMATION APPARATUS, PRODUCT OR PROCESS DISCLOSED.



## X-Bracket Timberframe Mono Roof with Spray Foam

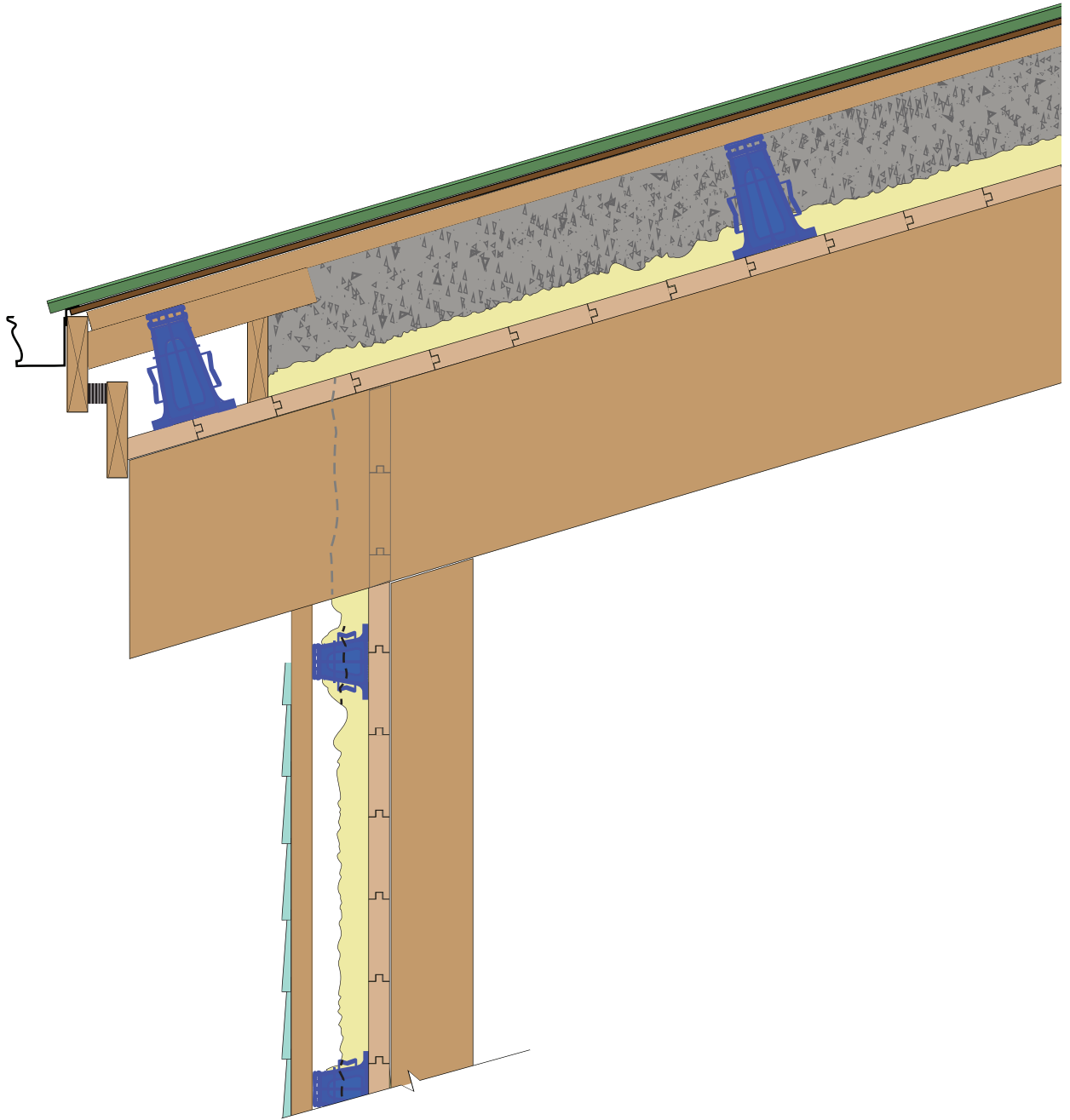
888-501-7899

InSoFast, LLC

[www.InSoFast.com](http://www.InSoFast.com)



# X-Bracket Timberframe Roof with Spray Foam Flash and Rockwool



DUE TO VARIANCES IN LOCAL CODES, CONSTRUCTION PRACTICES, AND REQUIREMENTS, ALL DETAILS SHALL BE CONSTRUCTED IN ACCORDANCE WITH SUCH LOCAL CODES, CONSTRUCTION PRACTICES, AND REQUIREMENTS REGARDLESS OF DETAIL CONSTRUCTION SHOWN IN THIS DRAWING. INSOFAST, LLC MAKES NO WARRANTY, EXPRESSED OR IMPLIED. INSOFAST, LLC ASSUMES NO LEGAL LIABILITY OR RESPONSIBILITY FOR THE ACCURACY, COMPLETENESS, OR USEFULNESS OR ANY INFORMATION APPARATUS, PRODUCT OR PROCESS DISCLOSED.



## X-Bracket CTimberframe Roof with Spray Foam Flash and Rockwool

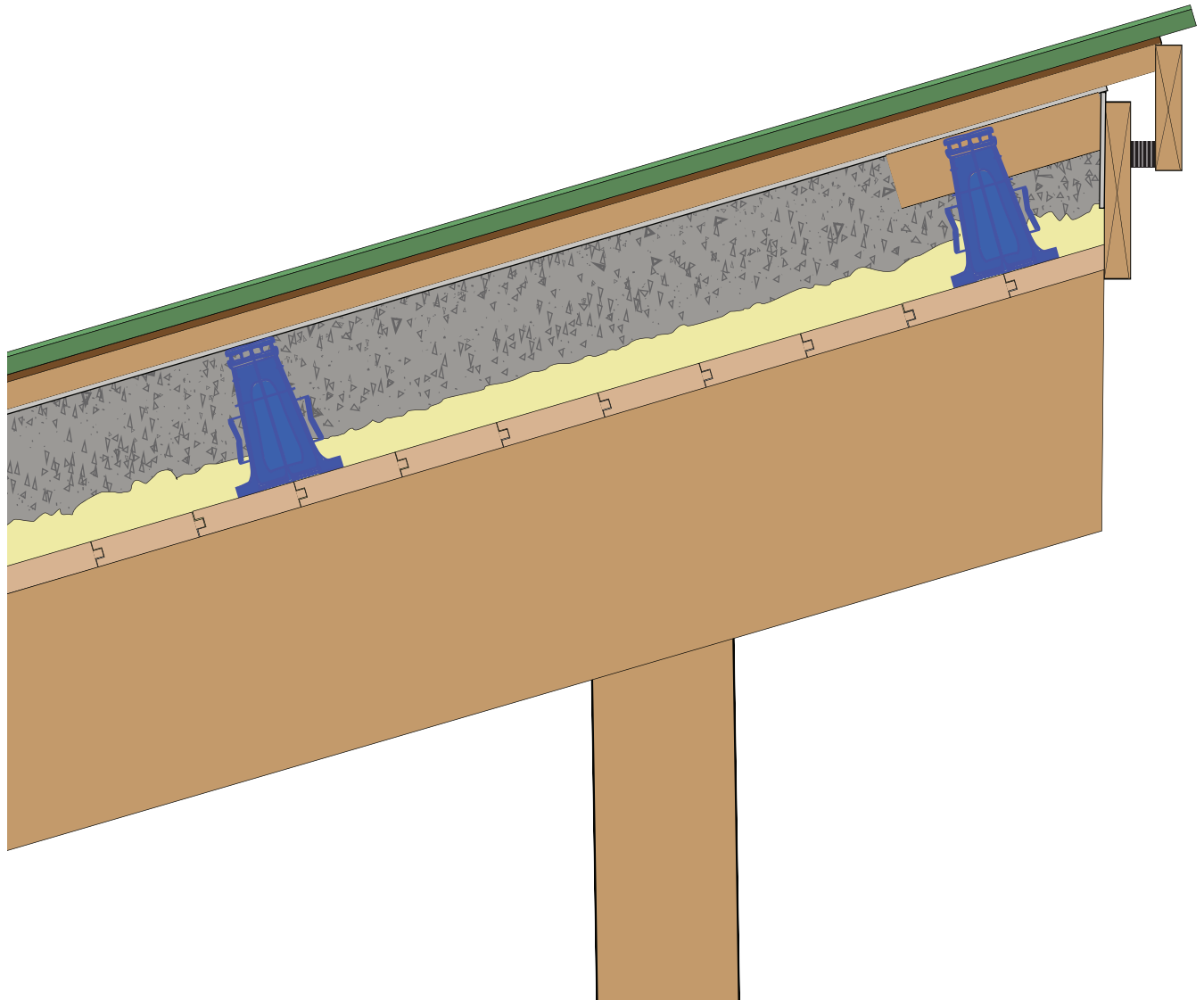
888-501-7899

InSoFast, LLC

[www.InSoFast.com](http://www.InSoFast.com)



# X-Bracket Timberframe Top of Roof Venting



DUE TO VARIANCES IN LOCAL CODES, CONSTRUCTION PRACTICES, AND REQUIREMENTS, ALL DETAILS SHALL BE CONSTRUCTED IN ACCORDANCE WITH SUCH LOCAL CODES, CONSTRUCTION PRACTICES, AND REQUIREMENTS REGARDLESS OF DETAIL CONSTRUCTION SHOWN IN THIS DRAWING. INSOFAST, LLC MAKES NO WARRANTY, EXPRESSED OR IMPLIED. INSOFAST, LLC ASSUMES NO LEGAL LIABILITY OR RESPONSIBILITY FOR THE ACCURACY, COMPLETENESS, OR USEFULNESS OR ANY INFORMATION APPARATUS, PRODUCT OR PROCESS DISCLOSED.



## X-Bracket Timberframe Top of Roof Venting

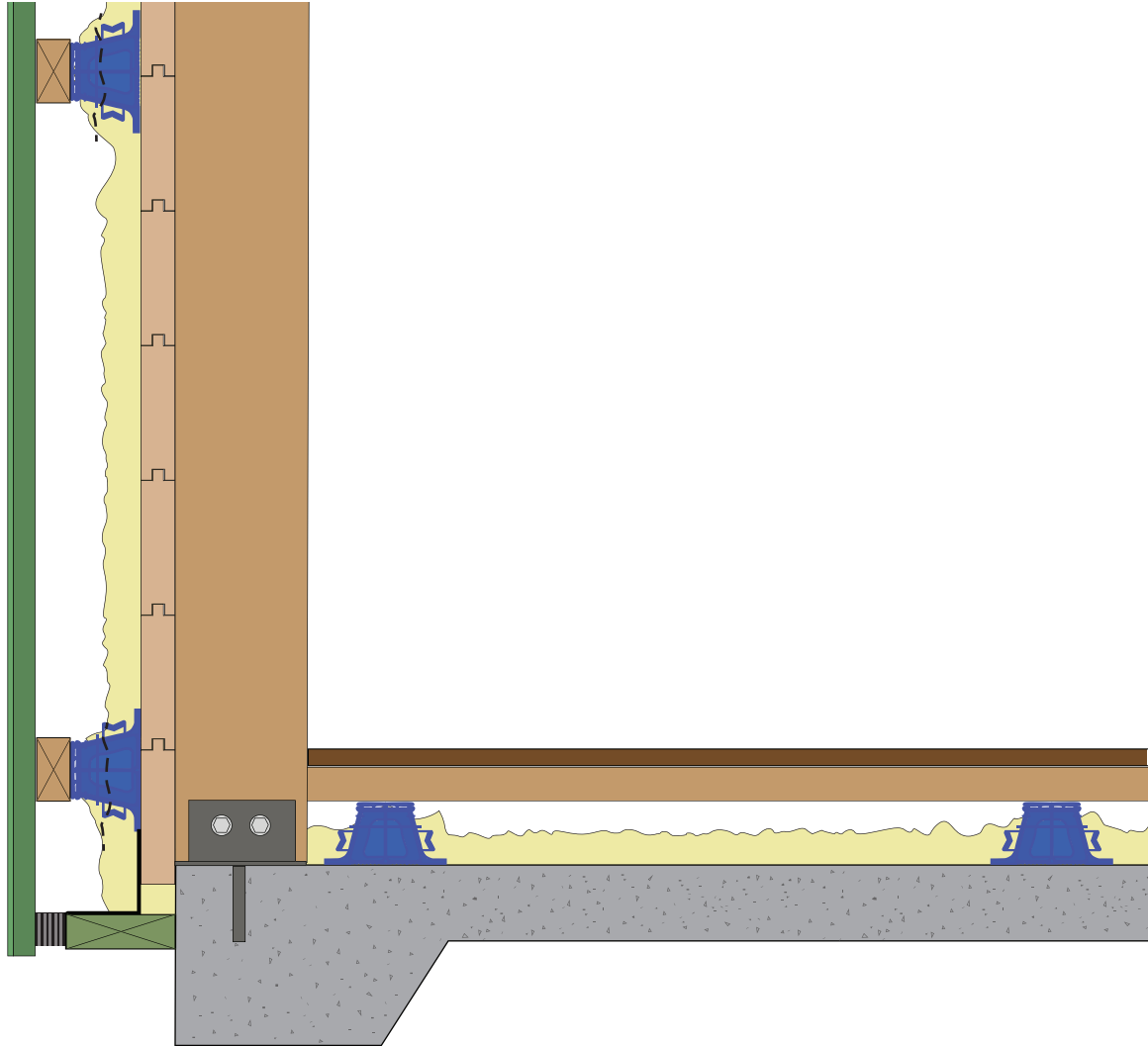
888-501-7899

InSoFast, LLC

[www.InSoFast.com](http://www.InSoFast.com)



# X-Bracket Timberframe with Horizontal Furring



DUE TO VARIANCES IN LOCAL CODES, CONSTRUCTION PRACTICES, AND REQUIREMENTS, ALL DETAILS SHALL BE CONSTRUCTED IN ACCORDANCE WITH SUCH LOCAL CODES, CONSTRUCTION PRACTICES, AND REQUIREMENTS REGARDLESS OF DETAIL CONSTRUCTION SHOWN IN THIS DRAWING. INSOFAST, LLC MAKES NO WARRANTY, EXPRESSED OR IMPLIED. INSOFAST, LLC ASSUMES NO LEGAL LIABILITY OR RESPONSIBILITY FOR THE ACCURACY, COMPLETENESS, OR USEFULNESS OR ANY INFORMATION APPARATUS, PRODUCT OR PROCESS DISCLOSED.



## X-Bracket Timberframe with Horizontal Furring

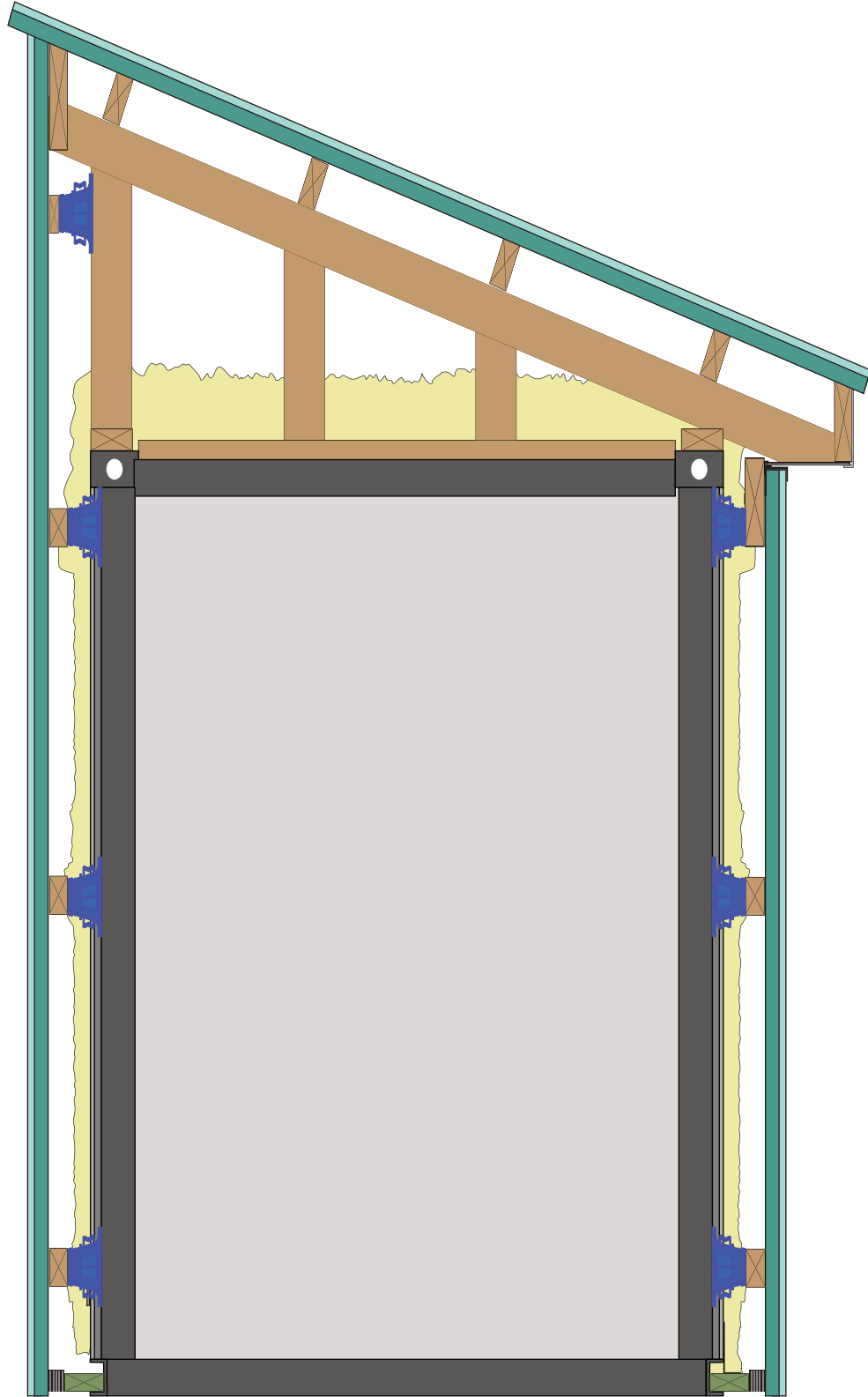
888-501-7899

InSoFast, LLC

[www.InSoFast.com](http://www.InSoFast.com)



# X-Bracket Conex Exterior with Horizontal Furring



DUE TO VARIANCES IN LOCAL CODES, CONSTRUCTION PRACTICES, AND REQUIREMENTS, ALL DETAILS SHALL BE CONSTRUCTED IN ACCORDANCE WITH SUCH LOCAL CODES, CONSTRUCTION PRACTICES, AND REQUIREMENTS REGARDLESS OF DETAIL CONSTRUCTION SHOWN IN THIS DRAWING. INSOFAST, LLC MAKES NO WARRANTY, EXPRESSED OR IMPLIED. INSOFAST, LLC ASSUMES NO LEGAL LIABILITY OR RESPONSIBILITY FOR THE ACCURACY, COMPLETENESS, OR USEFULNESS OR ANY INFORMATION APPARATUS, PRODUCT OR PROCESS DISCLOSED.



## X-Bracket Conex Exterior with Horizontal Furring

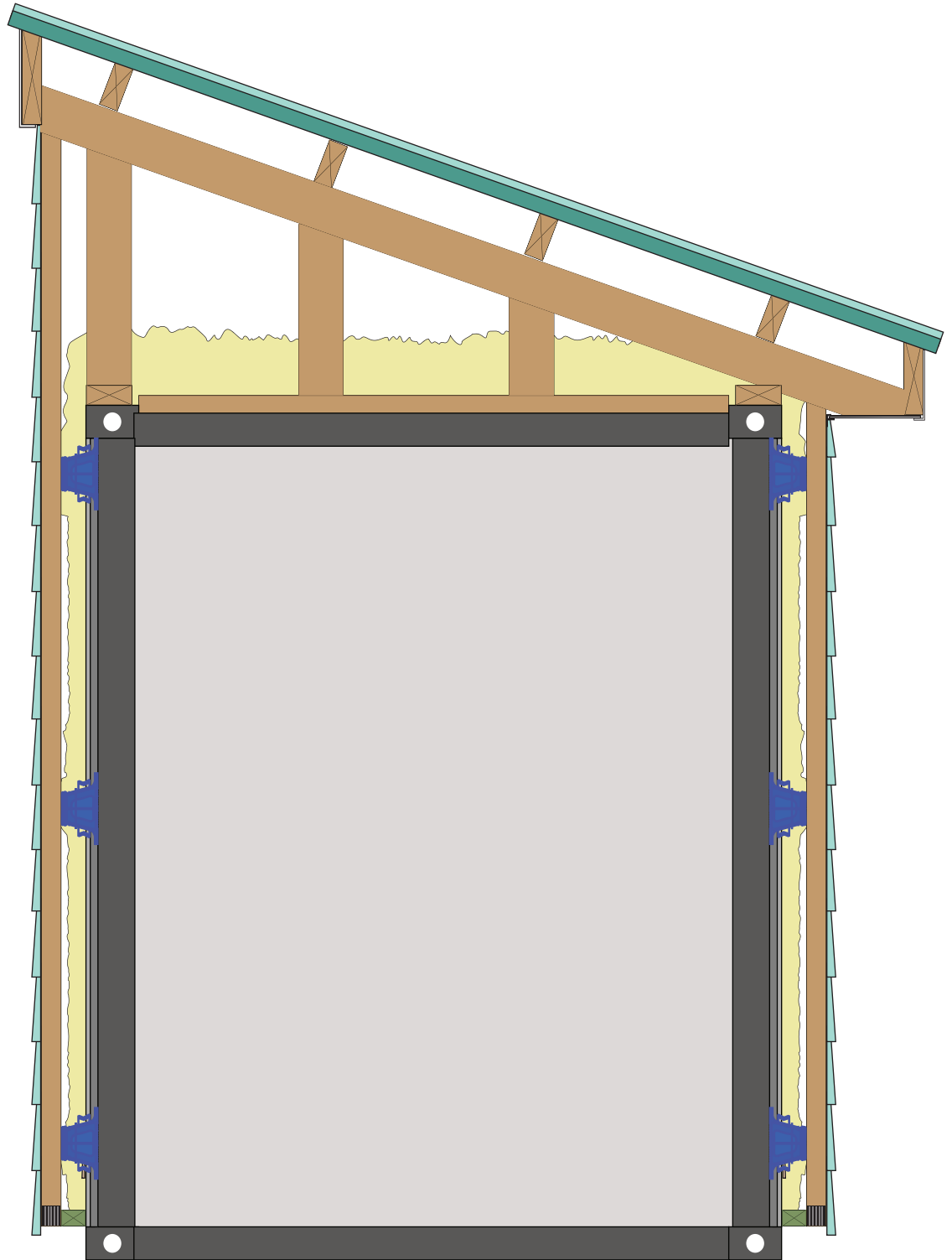
888-501-7899

InSoFast, LLC

[www.InSoFast.com](http://www.InSoFast.com)



# X-Bracket Conex Exterior with Vertical Furring



DUE TO VARIANCES IN LOCAL CODES, CONSTRUCTION PRACTICES, AND REQUIREMENTS, ALL DETAILS SHALL BE CONSTRUCTED IN ACCORDANCE WITH SUCH LOCAL CODES, CONSTRUCTION PRACTICES, AND REQUIREMENTS REGARDLESS OF DETAIL CONSTRUCTION SHOWN IN THIS DRAWING. INSOFAST, LLC MAKES NO WARRANTY, EXPRESSED OR IMPLIED. INSOFAST, LLC ASSUMES NO LEGAL LIABILITY OR RESPONSIBILITY FOR THE ACCURACY, COMPLETENESS, OR USEFULNESS OR ANY INFORMATION APPARATUS, PRODUCT OR PROCESS DISCLOSED.



## X-Bracket Conex Exterior with Vertical Furring

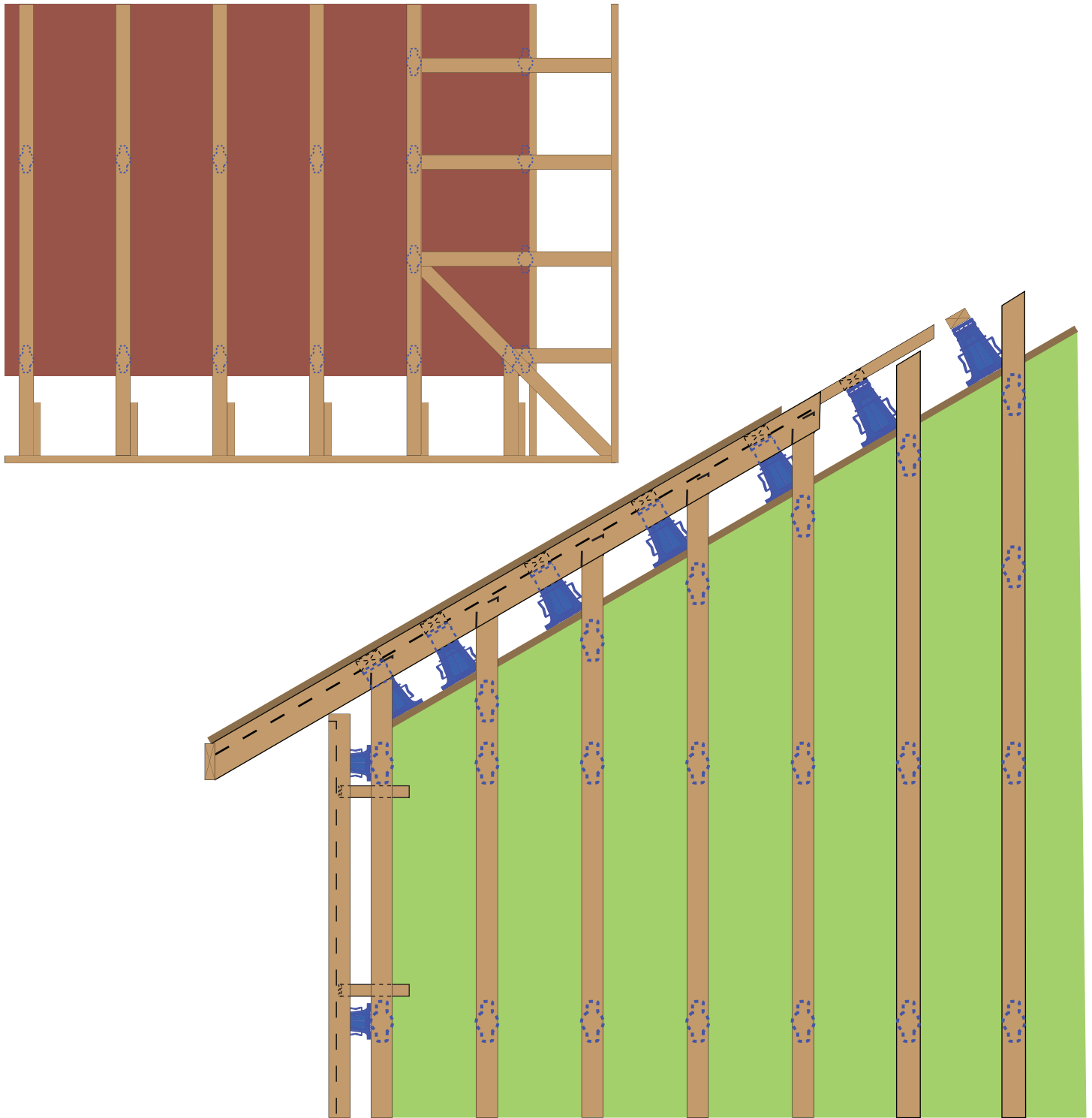
888-501-7899

InSoFast, LLC

[www.InSoFast.com](http://www.InSoFast.com)



# Extended Gable Framing for Overhangs over 18"



DUE TO VARIANCES IN LOCAL CODES, CONSTRUCTION PRACTICES, AND REQUIREMENTS, ALL DETAILS SHALL BE CONSTRUCTED IN ACCORDANCE WITH SUCH LOCAL CODES, CONSTRUCTION PRACTICES, AND REQUIREMENTS REGARDLESS OF DETAIL CONSTRUCTION SHOWN IN THIS DRAWING. INSOFAST, LLC MAKES NO WARRANTY, EXPRESSED OR IMPLIED. INSOFAST, LLC ASSUMES NO LEGAL LIABILITY OR RESPONSIBILITY FOR THE ACCURACY, COMPLETENESS, OR USEFULNESS OR ANY INFORMATION APPARATUS, PRODUCT OR PROCESS DISCLOSED.



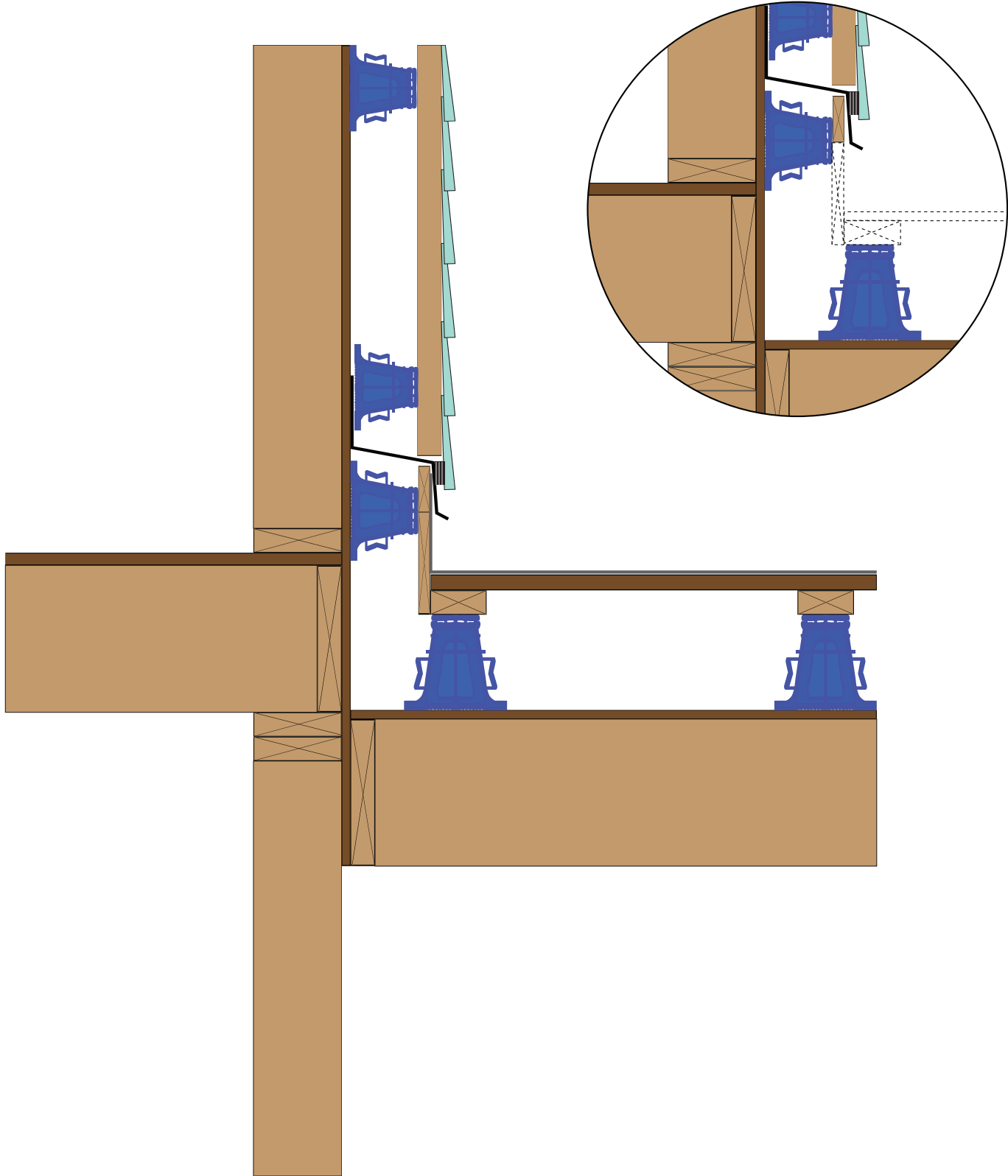
## Extended Gable Framing for Overhangs over 18"

888-501-7899

InSoFast, LLC

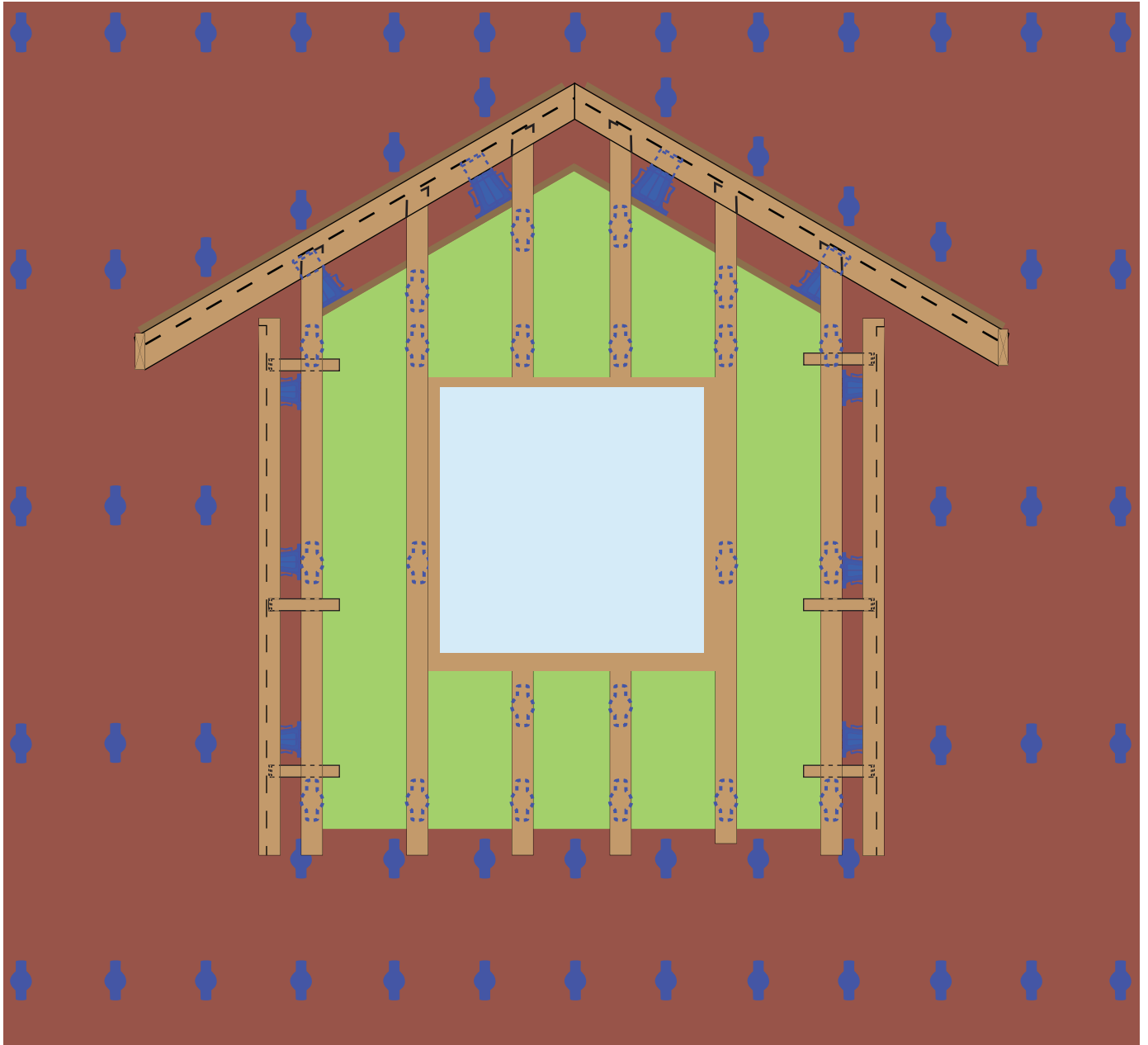
[www.InSoFast.com](http://www.InSoFast.com)

# Flat Roof Deck to Wall Connection



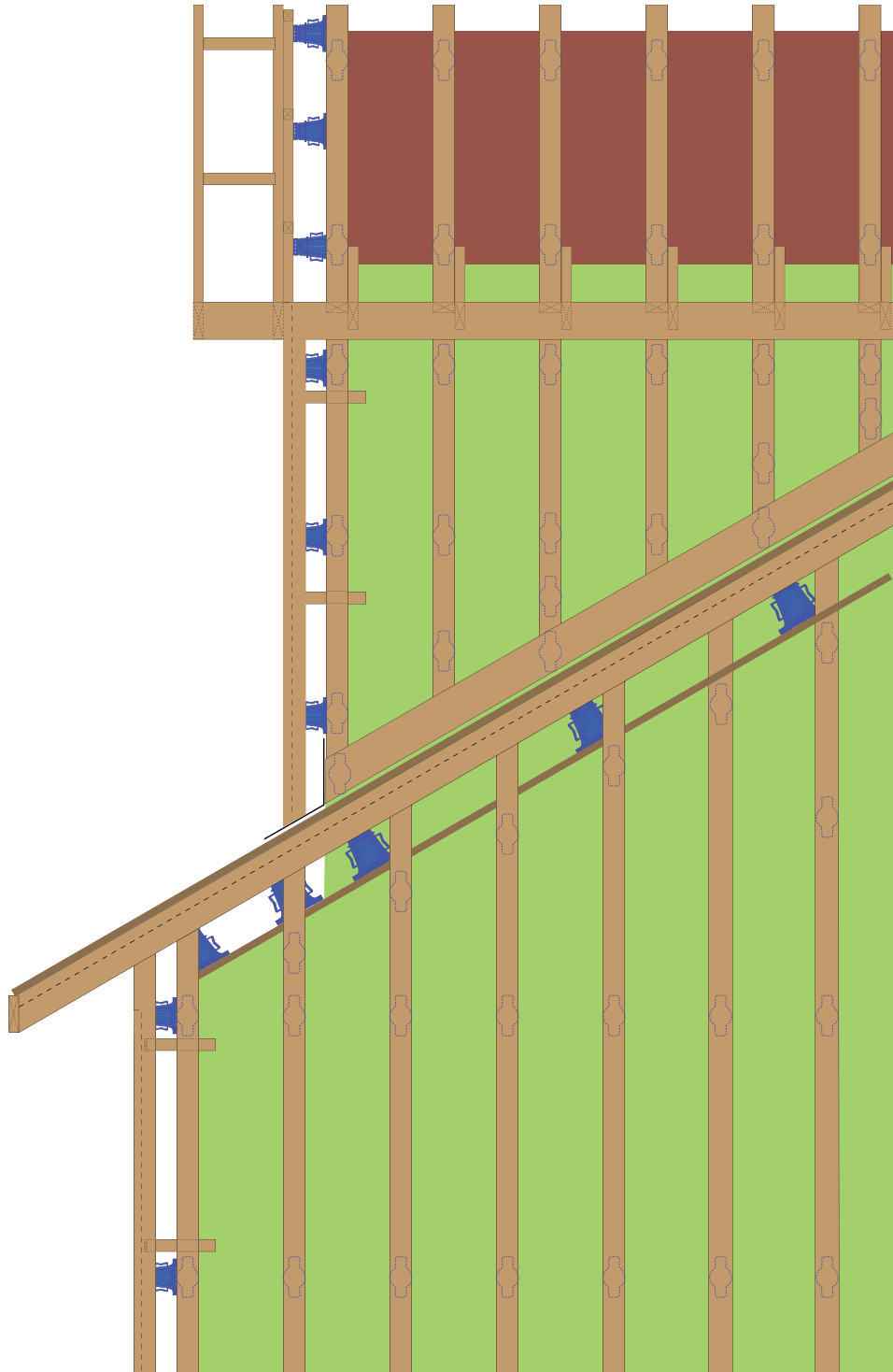
DUE TO VARIANCES IN LOCAL CODES, CONSTRUCTION PRACTICES, AND REQUIREMENTS, ALL DETAILS SHALL BE CONSTRUCTED IN ACCORDANCE WITH SUCH LOCAL CODES, CONSTRUCTION PRACTICES, AND REQUIREMENTS REGARDLESS OF DETAIL CONSTRUCTION SHOWN IN THIS DRAWING. INSOFAST, LLC MAKES NO WARRANTY, EXPRESSED OR IMPLIED. INSOFAST, LLC ASSUMES NO LEGAL LIABILITY OR RESPONSIBILITY FOR THE ACCURACY, COMPLETENESS, OR USEFULNESS OR ANY INFORMATION APPARATUS, PRODUCT OR PROCESS DISCLOSED.

# Gable End Dormer Front Elevation



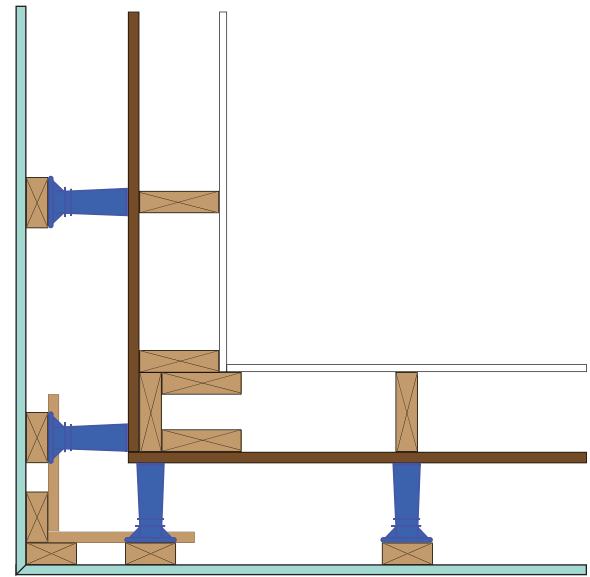
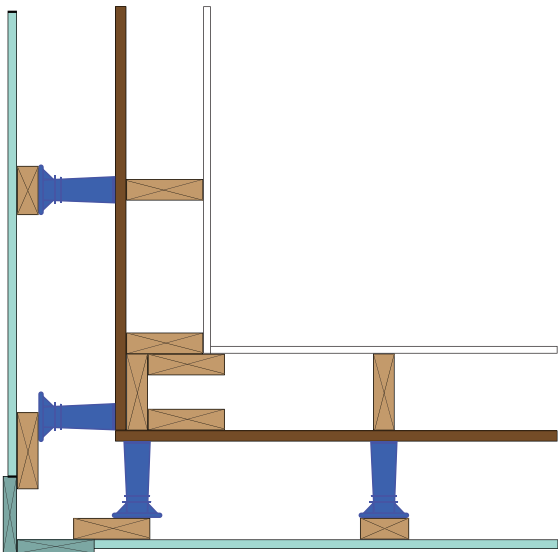
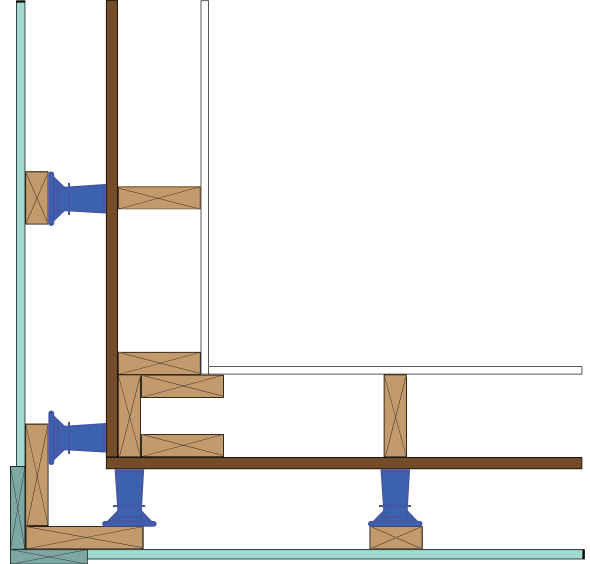
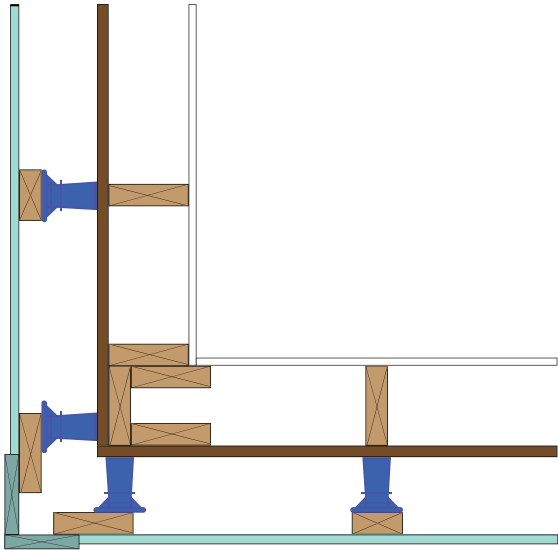
DUE TO VARIANCES IN LOCAL CODES, CONSTRUCTION PRACTICES, AND REQUIREMENTS, ALL DETAILS SHALL BE CONSTRUCTED IN ACCORDANCE WITH SUCH LOCAL CODES, CONSTRUCTION PRACTICES, AND REQUIREMENTS REGARDLESS OF DETAIL CONSTRUCTION SHOWN IN THIS DRAWING. INSOFAST, LLC MAKES NO WARRANTY, EXPRESSED OR IMPLIED. INSOFAST, LLC ASSUMES NO LEGAL LIABILITY OR RESPONSIBILITY FOR THE ACCURACY, COMPLETENESS, OR USEFULNESS OR ANY INFORMATION APPARATUS, PRODUCT OR PROCESS DISCLOSED.

# Gable End Dormer Side Elevation



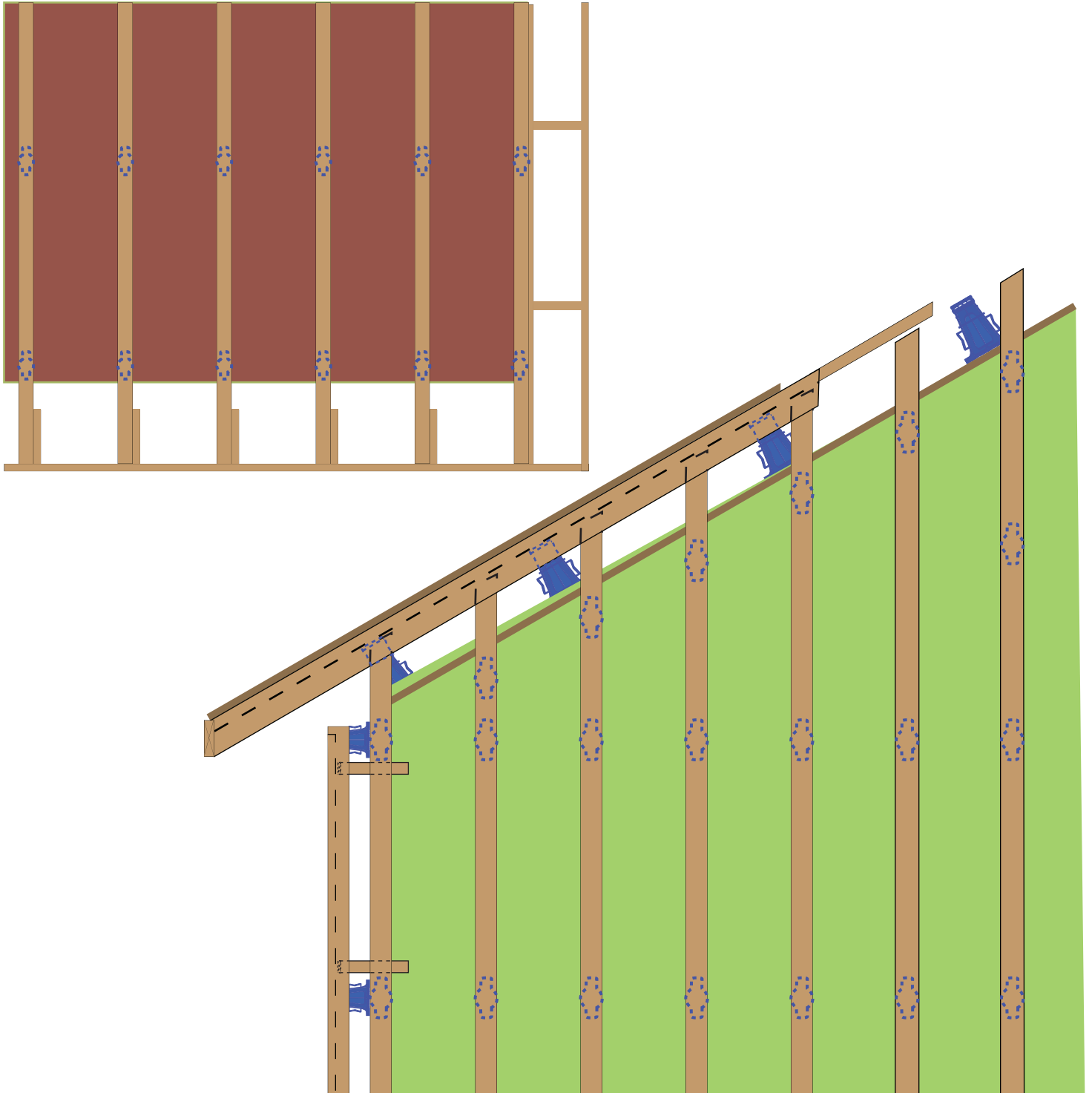
DUE TO VARIANCES IN LOCAL CODES, CONSTRUCTION PRACTICES, AND REQUIREMENTS, ALL DETAILS SHALL BE CONSTRUCTED IN ACCORDANCE WITH SUCH LOCAL CODES, CONSTRUCTION PRACTICES, AND REQUIREMENTS REGARDLESS OF DETAIL CONSTRUCTION SHOWN IN THIS DRAWING. INSOFAST, LLC MAKES NO WARRANTY, EXPRESSED OR IMPLIED. INSOFAST, LLC ASSUMES NO LEGAL LIABILITY OR RESPONSIBILITY FOR THE ACCURACY, COMPLETENESS, OR USEFULNESS OR ANY INFORMATION APPARATUS, PRODUCT OR PROCESS DISCLOSED.

# Outside Corner Details



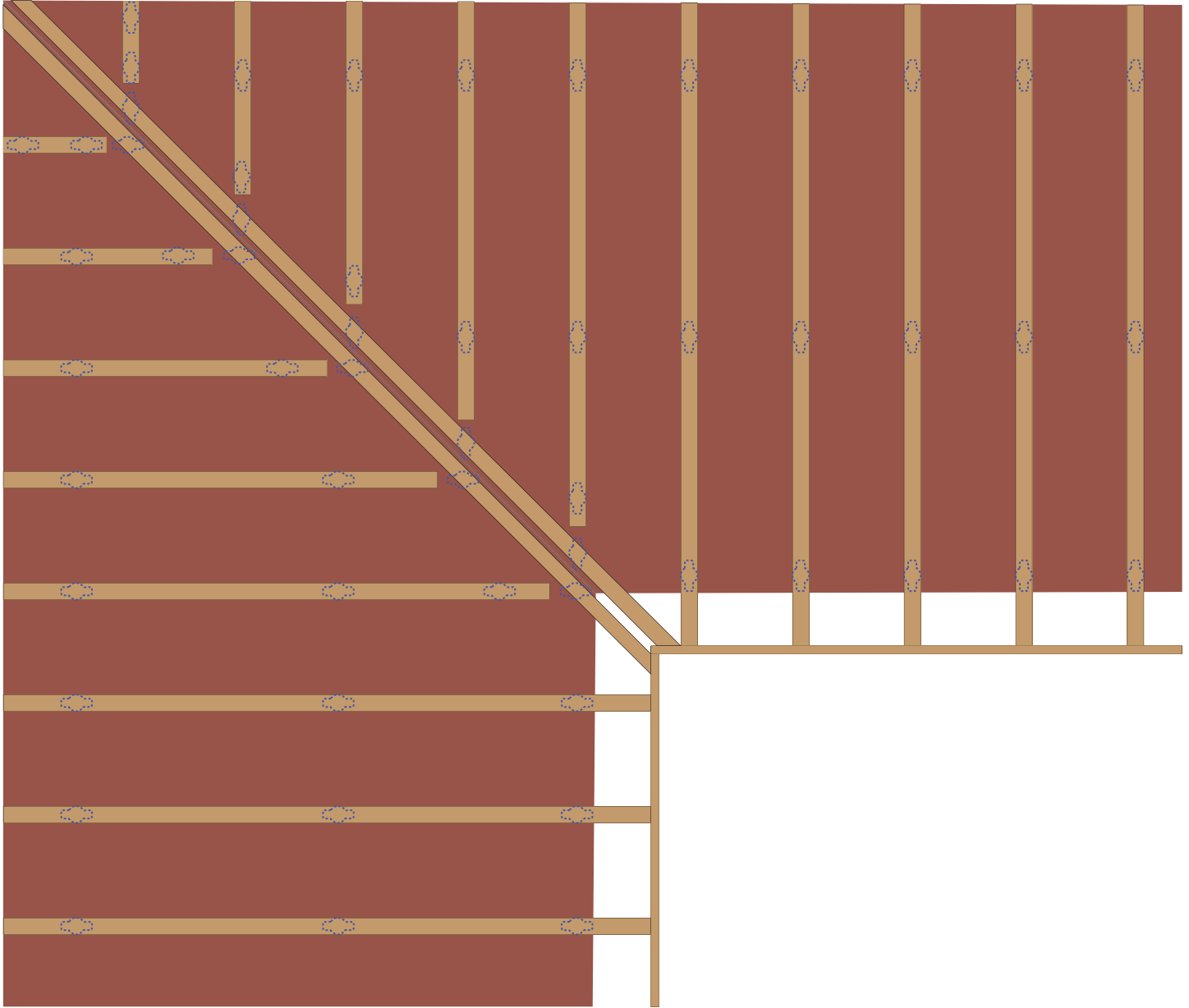
DUE TO VARIANCES IN LOCAL CODES, CONSTRUCTION PRACTICES, AND REQUIREMENTS, ALL DETAILS SHALL BE CONSTRUCTED IN ACCORDANCE WITH SUCH LOCAL CODES, CONSTRUCTION PRACTICES, AND REQUIREMENTS REGARDLESS OF DETAIL CONSTRUCTION SHOWN IN THIS DRAWING. INSOFAS, LLC MAKES NO WARRANTY, EXPRESSED OR IMPLIED. INSOFAS, LLC ASSUMES NO LEGAL LIABILITY OR RESPONSIBILITY FOR THE ACCURACY, COMPLETENESS, OR USEFULNESS OR ANY INFORMATION APPARATUS, PRODUCT OR PROCESS DISCLOSED.

# Standard Gable Framing for Overhangs less than 18"



DUE TO VARIANCES IN LOCAL CODES, CONSTRUCTION PRACTICES, AND REQUIREMENTS, ALL DETAILS SHALL BE CONSTRUCTED IN ACCORDANCE WITH SUCH LOCAL CODES, CONSTRUCTION PRACTICES, AND REQUIREMENTS REGARDLESS OF DETAIL CONSTRUCTION SHOWN IN THIS DRAWING. INSOFAST, LLC MAKES NO WARRANTY, EXPRESSED OR IMPLIED. INSOFAST, LLC ASSUMES NO LEGAL LIABILITY OR RESPONSIBILITY FOR THE ACCURACY, COMPLETENESS, OR USEFULNESS OR ANY INFORMATION APPARATUS, PRODUCT OR PROCESS DISCLOSED.

# Valley Framing Layout



DUE TO VARIANCES IN LOCAL CODES, CONSTRUCTION PRACTICES, AND REQUIREMENTS, ALL DETAILS SHALL BE CONSTRUCTED IN ACCORDANCE WITH SUCH LOCAL CODES, CONSTRUCTION PRACTICES, AND REQUIREMENTS REGARDLESS OF DETAIL CONSTRUCTION SHOWN IN THIS DRAWING. INSOFAST, LLC MAKES NO WARRANTY, EXPRESSED OR IMPLIED. INSOFAST, LLC ASSUMES NO LEGAL LIABILITY OR RESPONSIBILITY FOR THE ACCURACY, COMPLETENESS, OR USEFULNESS OR ANY INFORMATION APPARATUS, PRODUCT OR PROCESS DISCLOSED.